

# Flexible SharePoint Content Restructuring

## DocAve<sup>®</sup> Content Manager

FREE 30 DAY TRIAL  
[www.AvePoint.de](http://www.AvePoint.de)

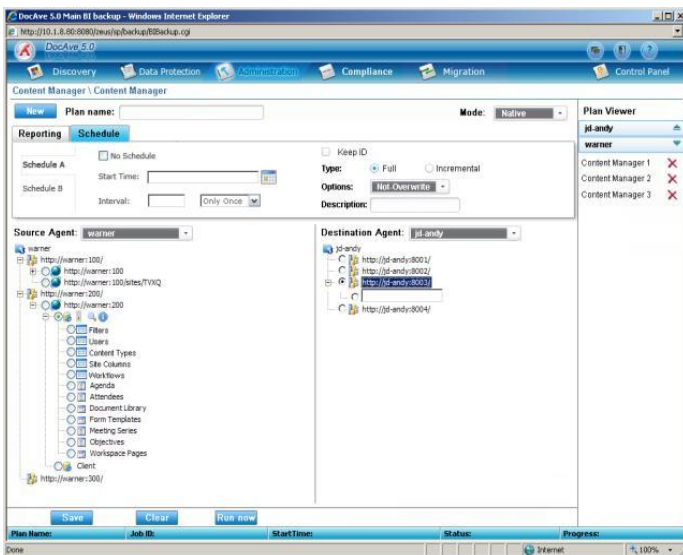


Backup & Recovery  
Administration  
Deployment & Replication  
Storage Optimization  
Reporting & Testing  
Compliance & Archiving  
Migration To SharePoint

### Live, Point-and-Click Content Organisation and Management for SharePoint

DocAve Content Manager allows seamless migration of SharePoint content from one location to another within or between SharePoint farms. It provides customers with the ability to replicate – in real-time or according to user –defined schedules – all documents, sites collections, and sites.

With DocAve Content Manager, administrators and authorised users can restructure the content and topology of any SharePoint environment with precision and ease, all from a single web-based interface.



DocAve Content Manager is an essential tool for empowering SharePoint administrators with total control over their SharePoint environments' growth and productivity by delivering a simple, "point-and-click" item, site collection, and site-level content management solution that preserves all metadata, including version histories and securities.

### Business Advantages

- **Easily manage countless site collections, sites, lists, and libraries:** Restructure content on multiple sites within or across SharePoint farms, to simplify content deployment across sprawling environments
- **Full-fidelity data retention:** All content, metadata, securities/permissions, version histories, and customised layouts are maintained as content is replicated
- **Elegant, point-and-click user interface:** A centralised browser-based interface (integrated with Active Directory) allows designated users with different roles and permissions to manage content on all SharePoint farms. Its dual-frame layout allows for easy selection of content and location within a SharePoint URL tree
- **Enterprise-scale solution:** Efficient management of business-critical documents, site collections or sites can be processed in a live production environment without affecting the existing IT infrastructure
- **Automate content deployment:** Efficiently propagate content templates from a source site to departmental sites



**AvePoint<sup>®</sup>**  
Unleashing the Power of SharePoint<sup>™</sup>

## Technical Advantages of DocAve Content Manager

### Browser-based User Interface

- A user-friendly, side-by-side URL tree system accessible via the browser-based DocAve GUI provides a simple, Windows Explorer-like experience for deft content migration

### Content Migration Within Or Across Farms

- Copy live content to different locations, servers, and farms, all with full-fidelity

### Domain and User Mapping Across Farms

- Simplify cross-domain restructuring and reorganisation tasks by graphically mapping domains, users, and permissions, ensuring all data and metadata are fully maintained

### Easily Restructure Content According to Business Requirements

- Restructure content across multiple SharePoint environments or content databases to optimise production. Promote or demote sites on-the-fly, and copy content from list to list, library to library, or site to site

### Full Security-Trimming for Efficient Delegation

- Securely delegate content management tasks to site-level administrators with granular security management

### Full Support for all List types

- Whether it's document libraries, issues lists, Discussion Threads, Announcements or any other types of content, all can be replicated while preserving total integrity.

### Simplify and Streamline Release Management

- Easily migrate content from development or staging environments to production environments with ease, reducing deployment time windows and improving IT productivity.

## How To Buy DocAve

Telefon: +49 (0) 89 20 80 39 – 660  
E-mail: [SalesDE@AvePoint.com](mailto:SalesDE@AvePoint.com)

Evaluate DocAve Free at  
[www.avepoint.de/download](http://www.avepoint.de/download)

### For Government Organisations:

The DocAve Software Platform can be purchased directly from AvePoint or through the GSA Website at [www.GSAadvantage.gov](http://www.GSAadvantage.gov).



*\*As with all AvePoint software, DocAve Content Manager leverages only fully supported Microsoft methodologies and API's.*

**AvePoint Deutschland GmbH**  
Leopoldstrasse 244  
80807 München

Telefon: +49 (0) 89 20 80 39 - 660  
Fax: +49 (0) 89 20 80 39 – 676

For more information visit  
[www.AvePoint.de](http://www.AvePoint.de)

## About AvePoint

AvePoint is a global technology company and software innovator. Since 2001, AvePoint has been a leader in enterprise-strength infrastructure management solutions for the world's most popular collaboration platforms. Propelled by one of the world's largest development teams, AvePoint's award-winning DocAve and Atlas Software Platforms deliver comprehensive and flexible infrastructure support for SharePoint backup and recovery, replication, migration, administration, archiving, storage optimisation, deployment management, compliance, and SharePoint-Salesforce integration.

AvePoint's pioneering technology pilots the products of OEM partners such as NetApp and IBM. With headquarters, research facilities, and engineering centres in Jersey City, NJ, and wholly owned engineering centres and sales offices in San Jose, Los Angeles, Chicago, Washington D.C., and Houston, USA; London, UK; Melbourne, Australia; Munich, Germany; Tokyo, Japan; Singapore; and Changchun, Dalian, China, AvePoint serves over 5000 enterprise customers, including many Fortune-500 companies. Winner of the Best of Tech Ed award for "Best SharePoint Product" in 2008, AvePoint is a Depth Managed Gold Certified Microsoft Partner and GSA Certified Provider.

**Microsoft**  
**GOLD CERTIFIED**  
Partner

