

Replicate Information Across Locations

DocAve® Replicator

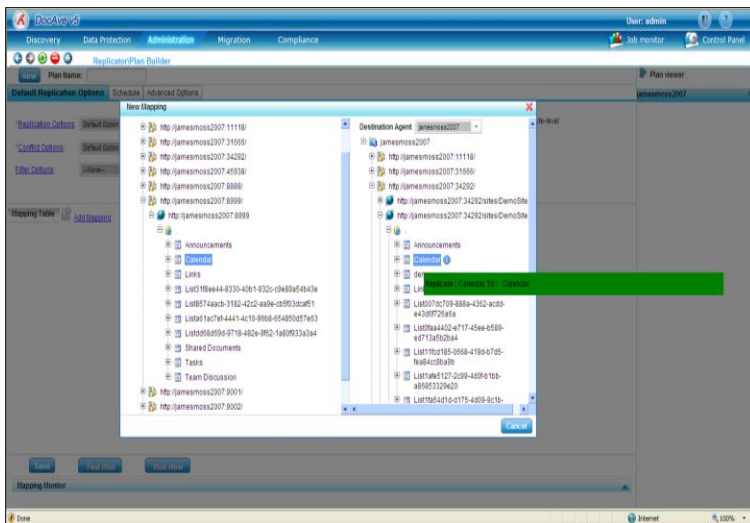
FREE 30 DAY TRIAL
www.AvePoint.de



Backup & Recovery
Administration
Deployment & Replication
Storage Optimization
Reporting & Testing
Compliance & Archiving
Migration To SharePoint

Live, Real-Time SharePoint Replication Across Any Number of Distributed Locations

With organisations seeking to gain competitive advantage in a global marketplace, reliable access to current data assets across geographically-distributed workplaces has become vital. DocAve Replicator delivers by providing the industry's most comprehensive synchronisation solution, with customisable conflict-resolution tools, robust bandwidth and network traffic controls, and variable off-line replication capabilities. Organisations need the ability to synchronise content, configurations, and securities between sites, applications, and servers. DocAve Replicator provides administrators with the ability to replicate all of these elements one-way, two-way, or one-to-many, within a single SharePoint environment, or across multiple SharePoint farms, even over an extranet.



DocAve Replicator is an essential tool for performing full fidelity replication, synchronisation and management of SharePoint content, configurations and securities. Using Replicator, SharePoint administrators can perform both real-time and regularly scheduled synchs of SharePoint data, ensuring that all users will access the same content – in the same way – from any replicated environment.

Business Advantages

- **Enable effective collaboration across geographically distributed locations:** Replicate content in real-time over limited bandwidths, ensuring even disconnected users have 24x7 access to the most up-to-date business critical information.
- **Easily maintain standardised documents across multiple farms:** Using two-way replication, users are assured that they are accessing and editing the same version of an item across multiple SharePoint environments.
- **Replicate content during production hours:** Throttle control allows replication processes to be scheduled and executed without consuming essential network bandwidth. Select incremental replications and byte-level differencing to limit the amount of content transferred.
- **Perform offline replication between locations:** Store replication data on a local or network drive for offline replication. Physically move data from one location to another even when network connections do not exist.
- **Selectively manage configurations, content, and securities from a single location:** You can replicate content, configurations, securities, versions, and users – granularly or in bulk – to multiple destinations at once.



AvePoint®
Unleashing the Power of SharePoint™

Technical Advantages of DocAve Replicator

One-Way and One-to-Many Replication

- Synchronise content, configurations, and securities between a single “primary” SharePoint environment to multiple farms, controlled via an intuitive drag-and-drop GUI over the intranet or an extranet (without opening extra ports in your firewall).

Two-Way Replication

- Keep data uniform on multiple SharePoint farms or locations using the two-way replication feature. Data added or altered from one location will automatically be updated in the alternate locations in real-time or according to a customisable schedule. Rule-based and manual conflict resolution options – with email notification – means only appropriate datasets are replicated.

Live or Scheduled Replication

- Perform live, real-time replication, with customisable triggers (including item update or deletion, list schema changes, etc.). To conserve bandwidth, perform scheduled migrations down to the 15-minute increment.

Byte-Level Differencing

- Transfer only updated data, further limiting the impact on performance while increasing speed of replication. DocAve’s use of change-log technology means optimised replication speeds are achieved, as only modified data is scanned.

Template-Based Replication

- Granularly propagate selected settings and configurations, and create mapping/settings profiles to standardise replication across your SharePoint environment.

Backup Before Replication

- Replicate data without worrying about overwriting content by using “backup before replication.” Similar to an undo function, this will revert the altered content to its original state.

Increase Replication Speed with Concurrent Processing

- Configure up to five concurrent threads to optimise efficiency with parallel replication of content across geographically dispersed locations.

Throttle Control and Offline Replication

- Optimise bandwidth usage via throttle control with connection retry. Replication can also be executed offline by scheduling export and import of data files over time.

How To Buy DocAve

Telefon: +49 (0) 89 20 80 39 – 660

E-mail: SalesDE@AvePoint.com

Evaluate DocAve Free at

www.avepoint.de/download

For Government Organisations:

The DocAve Software Platform can be purchased directly from AvePoint or through the GSA Website at www.GSAadvantage.gov.



**As with all AvePoint software, DocAve Replicator leverages only fully supported Microsoft methodologies and API's.*

AvePoint Deutschland

Leopoldstrasse 244
80807 München

Telefon: +49 (0) 89 20 80 39 - 660

Fax: +49 (0) 89 20 80 39 – 676

For more information visit

www.AvePoint.de

About AvePoint

AvePoint is a global technology company and software innovator. Since 2001, AvePoint has been a leader in enterprise-strength infrastructure management solutions for the world’s most popular collaboration platforms. Propelled by one of the world’s largest development teams, AvePoint’s award-winning DocAve and Atlas Software Platforms deliver comprehensive and flexible infrastructure support for SharePoint backup and recovery, replication, migration, administration, archiving, storage optimisation, deployment management, compliance, and SharePoint-Salesforce integration.

AvePoint’s pioneering technology pilots the products of OEM partners such as NetApp and IBM. With headquarters, research facilities, and engineering centres in Jersey City, NJ, and wholly owned engineering centres and sales offices in San Jose, Los Angeles, Chicago, Washington D.C., and Houston, USA; London, UK; Melbourne, Australia; Munich, Germany; Tokyo, Japan; Singapore; and Changchun, Dalian, China, AvePoint serves over 5000 enterprise customers, including many Fortune-500 companies. Winner of the Best of Tech Ed award for “Best SharePoint Product” in 2008, AvePoint is a Depth Managed Gold Certified Microsoft Partner and GSA Certified Provider.

Microsoft
GOLD CERTIFIED
Partner

