

One Dashboard, Total Platform Awareness

DocAve® Report Center

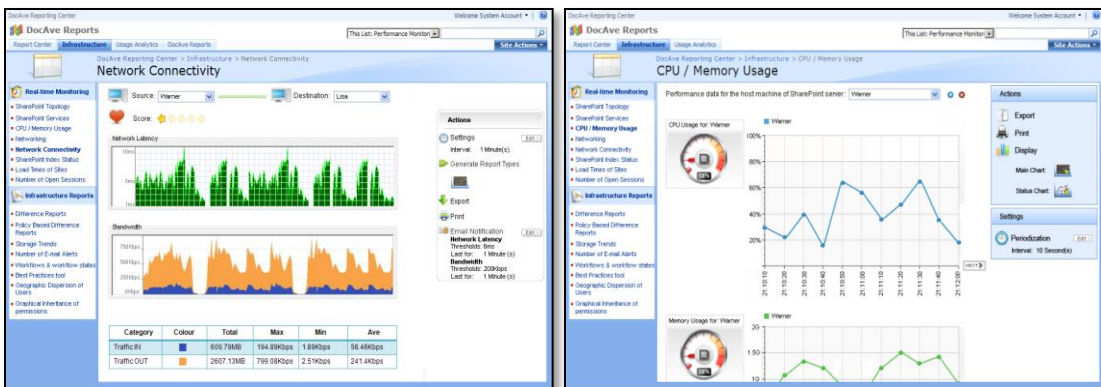
Free 30-day demo at www.AvePoint.de



Backup & Recovery
Administration
Deployment & Replication
Storage Optimization
Reporting & Testing
Compliance & Archiving
Migration To SharePoint

One Dashboard for Comprehensive Platform Intelligence

DocAve Report Center is the industry's most powerful and flexible SharePoint intelligence toolkit, providing single-pane access to a wide variety of mission-critical analytics about your platform infrastructure, health, and activity. With DocAve Report Center, administrators can gain a comprehensive understanding of their platform's topology, usage, and performance trends, and generate flexible, fully customisable reports based on this critical intelligence. Piloted via a single, easy-to-use interface, DocAve Report Center is the only tool administrators need to obtain the knowledge vital for delivering optimal platform performance and successful strategic planning.



Real-Time Platform Monitoring

- Track, record, and report upon virtually every aspect of platform architecture, activity, and process. Leverage customisable graphical displays to analyse trending, and establish customisable alerts and notifications to proactively respond to issues that might affect platform performance.

Comprehensive Infrastructure Reporting

- Track, record, and report upon all aspects of the platform's architecture and topology, generate real-time, side-by-side difference reports at any level to discern outliers, monitor load times of SharePoint sites and other elements to track platform performance.

SharePoint Usage Analysis

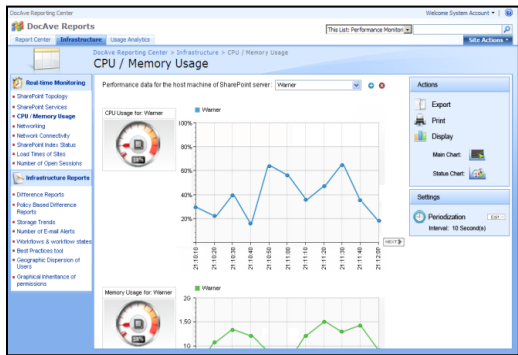
- Leverage live platform content and audit data to track and graphically represent platform usage, user/search activity, and permissions-regimes. Track storage per user, and gather critical statistics regarding your company's content producers and consumers.

DocAve Processes and Status Reporting

- Monitor and analyse all DocAve infrastructure management processes, including disk space usage, job performance, and agent/server topology. Fully customisable alerts deliver real-time notification on virtually all DocAve processes.

*As with all AvePoint software, DocAve Report Center leverages only fully supported Microsoft methodologies and APIs.



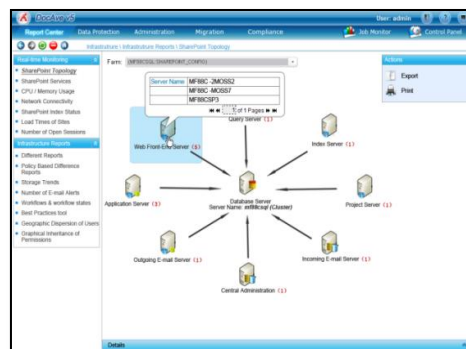
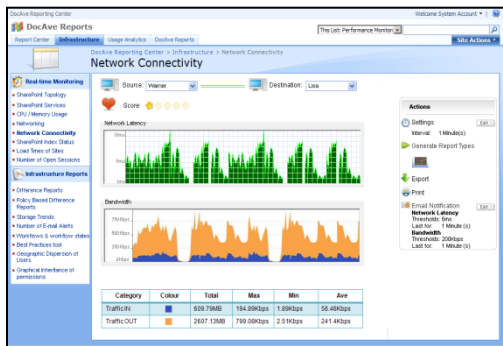


Real-Time Platform Monitoring

Track SharePoint index status, network bandwidth usage, CPU and memory consumption, and many more metrics all from a single, customisable interface. Trend this data over time to discern optimal maintenance schedules. Leverage customisable alerts based on disk space and CPU usage to proactively address issues before they affect performance.

Comprehensive Infrastructure Reporting

Trend storage usage for each content database, web application, and site collection, and run real-time side-by-side difference reports at any level to discern outliers. Monitor load times of SharePoint sites and other elements to track platform performance.



SharePoint Usage and Analyses

Leverage audit data to track and graphically represent platform usage, user activity, and vital analytics including disk space usage per user and most frequently accessed content and search terms. With graphical permission-regime diagrams, discover and analyse explicit inheritance structures throughout the deployment. Gain valuable insight into inherited permissions regimes, which terms are being searched for, and analyse trending for end users production and consumption of content.

DocAve Processes and Status Reporting

Monitor and analyse all DocAve infrastructure management processes, including disk space usage, job performance, and agent/server topology. Fully customisable alerts ensure administrators are notified of interruptions in real-time.

Site Collection Name	Site Collection Type	Site Collection Status	Site Collection Details
SPS_Collector	SPS_Collector	SPS_Collector	SPS_Collector
SPS_Collector	SPS_Collector	SPS_Collector	SPS_Collector
SPS_Collector	SPS_Collector	SPS_Collector	SPS_Collector

About AvePoint

AvePoint is a global technology company and software innovator. Since 2001, AvePoint has been a leader in enterprise-strength infrastructure management solutions for the world's most popular collaboration platforms. Propelled by one of the world's largest development teams, AvePoint's award-winning DocAve and Atlas Software Platforms deliver comprehensive and flexible infrastructure support for SharePoint backup and recovery, replication, migration, administration, archiving, storage optimisation, deployment management, compliance, and SharePoint-Salesforce integration.

AvePoint's pioneering technology pilots the products of OEM partners such as NetApp and IBM. With headquarters, research facilities, and engineering centres in Jersey City, NJ, and wholly owned engineering centres and sales offices in San Jose, Los Angeles, Chicago, Washington D.C., and Houston, USA; London, UK; Melbourne, Australia; Munich, Germany; Tokyo, Japan; Singapore; and Changchun, Dalian, China, AvePoint serves over 5000 enterprise customers, including many Fortune-500 companies. Winner of the Best of Tech Ed award for "Best SharePoint Product" in 2008, AvePoint is a Depth Managed Gold Certified Microsoft Partner and GSA Certified Provider.



AvePoint Deutschland

Leopoldstrasse 244

80807 München

Telephone: +49 (0) 89 20 80 39 - 660