

# DocAve v5 SharePoint Migrator

Release Date: September 8, 2008



## Seamless SharePoint Migration, Done Right

Developed to address productivity challenges, Microsoft's SharePoint platform is an easy-to-use collaboration tool and knowledge repository. In the latest version of SharePoint – Office SharePoint Server 2007 (MOSS) – Microsoft has added new and innovative features that revolutionize the way knowledge workers collaborate and maintain digital assets. Many organizations, however, are still searching for simple and reliable solutions to migrate existing content from previous versions of SharePoint into MOSS, in order to take best advantage of this latest release.

With DocAve SharePoint Migrator, administrators can perform full fidelity content migration at the Item, Subsite, or Site level. DocAve's efficient and reliable data transfer is unique in its ability to migrate content while retaining all of the associated metadata, letting organizations maximize their return on existing investments with regard to content residing in previous versions of SharePoint.

*\*As with all AvePoint software, DocAve SharePoint Migrator leverages only fully supported Microsoft methodologies and API's.*

### Key Features and Benefits of SharePoint Migrator

#### **Minimize Effort Required to Deploy SharePoint 2007**

DocAve SharePoint Migrator automatically moves content from source SharePoint 2003 instances to their mapped elements in SharePoint 2007. All content previously in SharePoint 2003 is kept intact, assuring users that no data will be lost during the transfer. Additionally, all folder structures, document properties and associated metadata - as well as permissions and access controls - are retained with full fidelity. End-users can confidently continue accessing their content without interruption.

#### **Reuse Existing SharePoint 2003 Backups to Ease Migration**

Organizations have the option to perform a backup\* or live migration. Those choosing the backup migration option can reuse existing backups of their SharePoint 2003 environments to upgrade to SharePoint 2007. Administrators won't have to recreate their source content selection, thus minimizing the effort required for migration resulting in improved IT productivity.

#### **Rollback Capability Provides Optimal Assurance of a Successful Migration**

With SharePoint Backup migration, organizations can be rest assured that a migration task is performed to satisfy even the most stringent requirements. In the event that the scheduled jobs do not meet the needs of the organizations, they can easily rollback to their existing SharePoint 2003 product environment without missing a step. This gives administrators the opportunity to reassess the migration process to ensure a properly executed task with minimal error.

*\*Backup migration option not available with SharePoint Migrator Lite.*

## Single-Step, Real-time Content Migration Via Live Migration

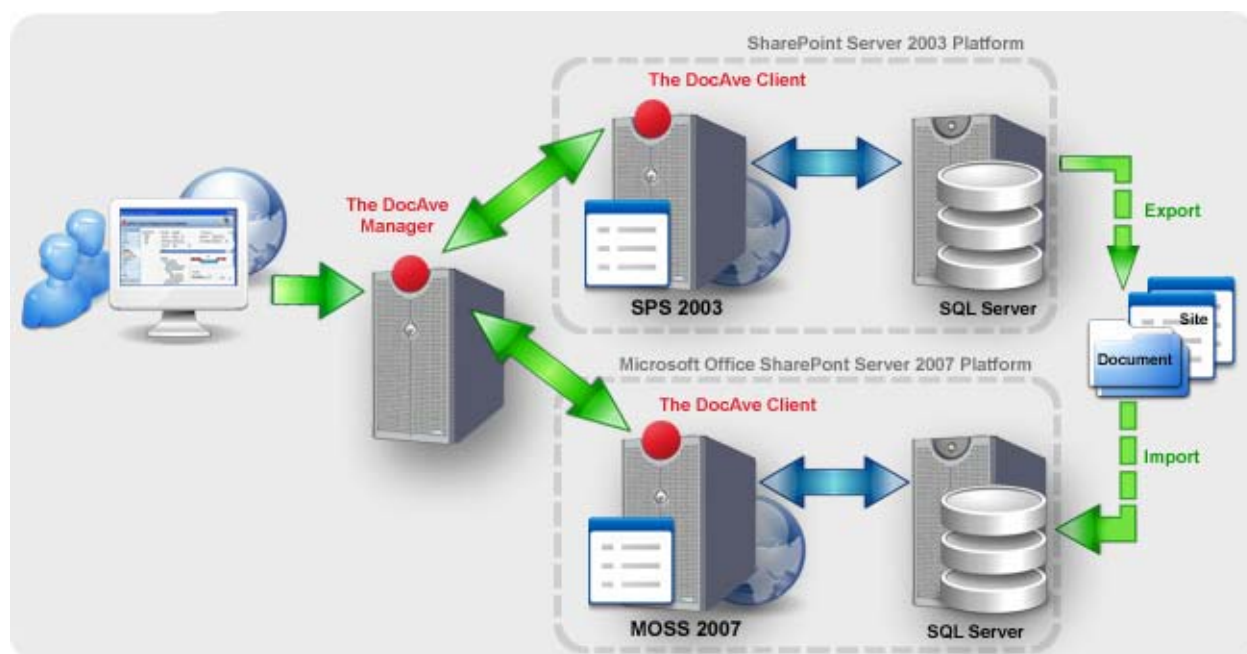
The Live Migration option in DocAve SharePoint Migrator offers an “On-the-Fly” process for transferring data from SharePoint 2003 to SharePoint 2007, all with drag-and-drop functionality. Live SharePoint 2003 content can be selectively replicated instantly for an immediate cutover to a production SharePoint 2007 environment, or jobs can be scheduled to minimize the impact on the environment.

## Flexible Deployment and Scheduling

Migrate an entire instance, public folder, or just an individual content item. Reorganize or create new folders upon migration to clean up existing clutter, all from an intuitive, GUI-based interface. map your SharePoint 2003 users and groups to new users and groups in SharePoint 2007, or map sites to use different site templates, or map list columns to new columns in SharePoint 2007. Granular or bulk content migration and flexible job scheduling allows administrators to plan migration jobs according to business needs and other organizational timetables, reducing the impact on functioning production environments.

## Leverage Your Existing Infrastructure

No special hardware required – run SharePoint Migrator within your existing IT infrastructure from a single Web-based interface. Job configuration and administration can easily be performed through a centralized management console. Schedule multiple jobs within the same migration plan and track and monitor job progress. This allows administrators to access the console interface from anywhere and have the ability to perform any migration task remotely. It’s simple, quick, and inexpensive.



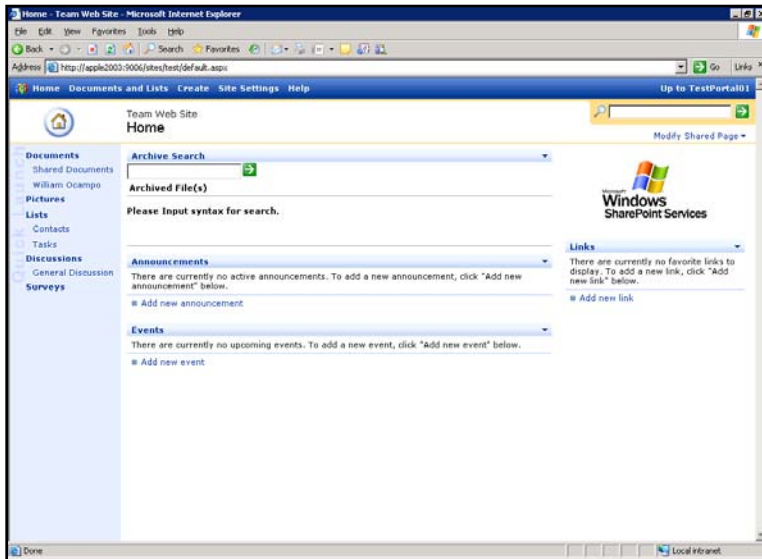
## Supported Environments:

- **Migrate from** Microsoft SharePoint Portal Server 2003 and/or Windows SharePoint Services v2
- **Migrate to** Microsoft Office SharePoint Server 2007 and/or Windows SharePoint Services v3

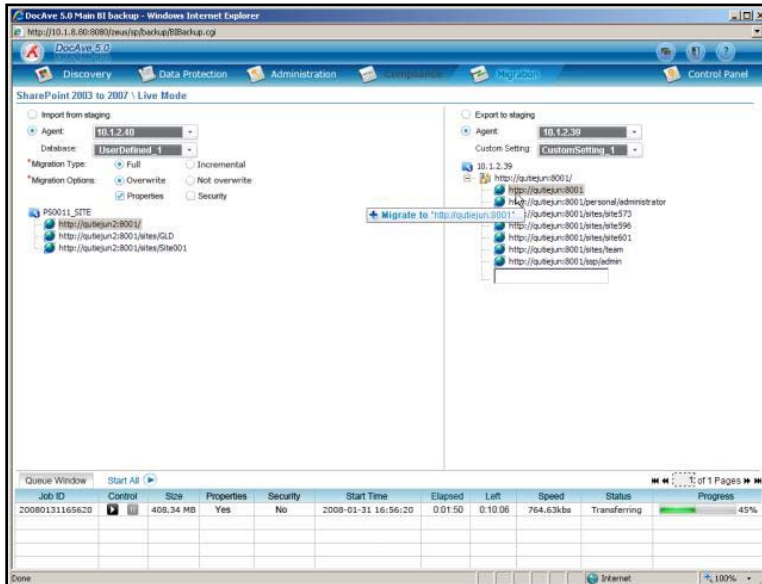
## Supported Elements and Mappings for Migration

Source	Type	SharePoint Migrator (Backup & Live Migration Options)
<b>Libraries</b>	Document Library Form Library Wiki Page Library Picture Library Translation Management Library Data Connection Library Slide Library Report Library	✓ YES
<b>Communications List</b>	Announcements Contacts Discussion Board	✓ YES
<b>Tracking Lists</b>	Links Calendar Tasks Project Tasks Issue Tracking Survey	✓ YES
<b>Custom Lists</b>	Custom List Custom List in Datasheet View Languages and Translators Import Spreadsheet	✓ YES
<b>Web Pages</b>	Basic Page Web Part Page Sites and Workspaces	✓ YES
<b>Metadata</b>	Single line of text Multiple lines of text Choice(menu to choose from) Number Currency Date and Time Lookup Yes/No Person or Group Hyperlink or Picture Calculated Business Data	✓ YES
<b>Security &amp; Properties</b>	Version settings Column Settings Permissions	✓ YES
<b>Version Histories</b>	Documents Lists	✓ YES
<b>Site templates</b>	Team site Blank site Document workspace Basic meeting workspace Blank meeting workspace Decision Meeting workspace Social Meeting workspace Multipage Meeting workspace	✓ YES

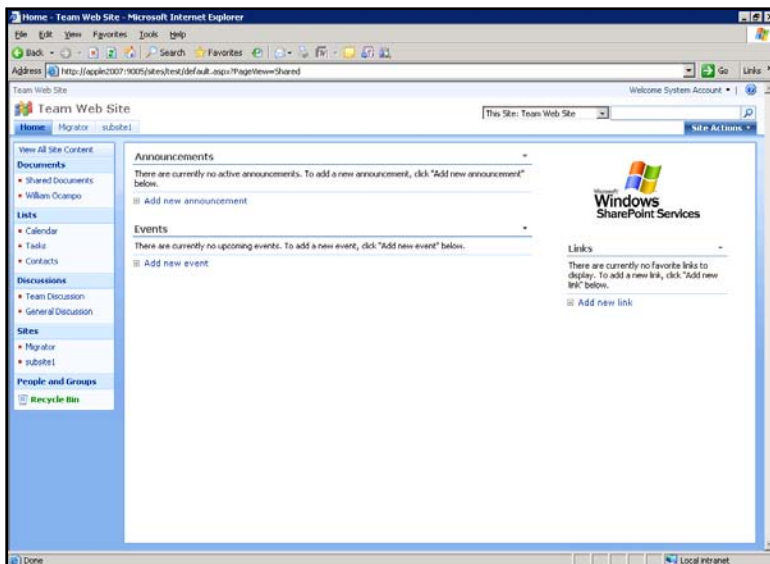
## Sample Migration Scenario



SharePoint 2003 Team Site



Using "Live" Migration to migrate a SharePoint 2003 team site to a MOSS 2007 top-level site



Resulting MOSS 2007 top-level site with folders and sub-sites

# How to Buy DocAve

AvePoint offers five Migration Modules as part of its integrated DocAve Software Platform. Though DocAve modules function within a unified platform, they can be purchased and deployed individually. Administrators can manage all migration tasks within a centralized Web-based interface to ensure that all content and users have been properly migrated to SharePoint from various sources.

## Available Migrator Modules

SHAREPOINT MIGRATOR	PUBLIC FOLDER MIGRATOR	FILE SYSTEM MIGRATOR	EROOM MIGRATOR	LOTUS NOTES MIGRATOR
SharePoint 2003 → SharePoint 2007	Exchange Public Folders → SharePoint 2003, 2007	File Systems → SharePoint 2007	EMC Documentum eRoom → SharePoint 2007	Lotus Notes → SharePoint 2007

### Free Evaluation Download

Start using the DocAve software immediately following a simple, wizard-driven installation in your existing SharePoint environment. Please note that some functionality of the DocAve Migrator modules might be limited. Download your copy today at [www.avepoint.com/download](http://www.avepoint.com/download)

### Purchase DocAve Migrator Modules

Please contact one of our Sales Executives to discuss your deployment requirements and for a sales quote. Call 1-800-661-6588 (US/Canada), 1-201-793-1111 Option 1 or e-mail [sales@avepoint.com](mailto:sales@avepoint.com).

### Learn more

For additional product information, please visit [www.avepoint.com](http://www.avepoint.com). For Product User Guides, visit [www.avepoint.com/support/user-guides](http://www.avepoint.com/support/user-guides).