

AvePoint[®] DocAve4.0[®]
(Enterprise Solutions for SharePoint)
Software Install Guide

August 2006

Copyright

2001-2006 AvePoint, Inc. All rights reserved. No part of this publication may be reproduced, stored in a retrieval system, or transmitted in any form or by any means, electronic, mechanical, photocopying, recording or otherwise, without the prior written consent of AvePoint Inc. 370 Campus Drive, Suite 104, Somerset NJ 08873, USA.

Trademarks

AvePoint DocAve[®], AvePoint logo, and AvePoint, Inc. are trademarks of AvePoint, Inc.
Microsoft, MS-DOS, Internet Explorer, SharePoint Portal Server 2003, Windows SharePoint Services, Windows SQL server, and Windows are either registered trademarks or trademarks of Microsoft Corporation.
Adobe Acrobat and Acrobat Reader are trademarks of Adobe Systems, Inc.
All other trademarks are property of their respective owners.

Changes

The material in this document is for information only and is subject to change without notice. While reasonable efforts have been made in the preparation of this document to assure its accuracy, AvePoint assumes no liability resulting from errors or omissions in this document or from the use of the information contained herein.

AvePoint reserves the right to make changes in the product design without reservation and without notification to its users.

AvePoint Inc.
370 Campus Drive, Suite 104
Somerset, NJ 08873
USA

For **Technical Support**, visit AvePoint Technical Support Resources website at:
<http://www.avepoint.com/website/support.html>

For **Products Information**, visit AvePoint Products website at:
<http://www.avepoint.com/website/product.html>

For **Services Information**, visit AvePoint Services website at:
<http://www.avepoint.com/website/service.html>

For **Sales Offices** and other contact information, visit AvePoint contacts website at:
<http://www.avepoint.com/website/contact.html>

Contents:

1	Revision History	4
2	About This Publication.....	5
3	Overview.....	7
4	System Requirements.....	8
5	Installation Location.....	9
6	Installation Steps.....	10
6.1	DocAve4.0 Server Installation.....	10
6.2	DocAve4.0 Client Installation.....	21
6.3	DocAve4.0 Media Server Installation.....	30
7	Verifying DocAve4.0 using the Microsoft Services tool.....	39
8	Accessing DocAve4.0	42
9	Uninstall Instructions	44

1 Revision History

This revision history summarizes the changes made in each published version of this document.

Document No.	Publication Date	Description of Revisions
DocAve4.0 Install Guide	May 2006	Initial version of the document. Much of this document is based on AvePoint internal design and quality assurance testing documents on DocAve 4.0
DocAve4.0 Install Guide	August 2006	Added instructions and screenshots of DocAve 4.0 Media Server. Added update screenshots of DocAve 4.0 Server and DocAve 4.0 Client installations.

2 About This Publication

This preface provides the following information about this DocAve4.0 Install Guide.

- Purpose
- Intended Audience
- How To Use This Publication
- Related Information

Purpose

This install guide explains in detail the system architecture, feature list, and integrated web interface of AvePoint's DocAve4.0 solution.

Intended Audience

This information is intended for:

- SharePoint administrators
- System integrators
- Value added resellers (VARs)
- Original Equipment Manufacturers (OEMs)

How To Use This Publication

This DocAve4.0 install guide is organized as follows:

- Section 1, "Overview" gives a high level feature overview of the DocAve4.0 product.
- Section 2, "System Requirements" detail the minimum system requirements needed to install both DocAve4.0 server and client(s).
- Section 3, "DocAve4.0 System Architecture" describes DocAve4.0's distributed server and client's system architecture.
- Section 4, "Supported Disaster Recovery Configuration" discusses some possible disaster recovery and SQL backup configurations DocAve4.0 could be used for.
- Section 5, "DocAve4.0 Web Interface" describes the various centralized management components of the new web based interface. This new web interface will integrate all AvePoint products into one easy-to-use, centralized administration and management panel.

Related Information

For additional information related to DocAve4.0 product installation, configurations, and administration, please see DocAve4.0 Install Guide, DocAve4.0 User Guide, and DocAve4.0 usage Flash movies.

3 Overview

This install guide explains the product features of AvePoint's latest extension in the SharePoint backup solution space. DocAve4.0 is an enterprise strength item-level backup, recovery, and content management solution for Microsoft Windows SharePoint Services, Microsoft SharePoint Portal Server, and Microsoft Project Server (including the x64 Editions).

DocAve4.0 consists of two modules, DocAve4.0 Server and DocAve4.0 Client. Both modules must be installed in order to run DocAve4.0. The installation requirements, location, and process are discussed in DocAve4.0's install guide (http://www.avepoint.com/download/DocAve4.0_Install_Guide.pdf).

Operating on AvePoint's latest distributed software platform, DocAve4.0 run on any environment, accessible from anywhere in your network via Microsoft Internet Explorer (IE), and monitors multiple SharePoint environments across the network. Specifically, DocAve4.0's main features include:

- Provide scheduled full, incremental, or differential backup at the site-level, subsite-level, and item-level.
- Real-time time restore of items, subsites, and sites directly onto your production server, or cross restore to any server on the network.
- Offer "point & click" simplicity to content management at the item-level, subsite level, and site level.
- Automated data-pruning and coalescing lets users manage backup data. Allow users to specify backup data size, storage medium, and location.
- Central administration of all SharePoint backup/recovery/management jobs scheduling/monitoring/reporting, user account management, and software agent management across multiple SharePoint farms from a SINGLE "accessible-from-ANYWHERE" web interface.

This document is organized as follows, Section 2 covers DocAve4.0's system requirements, Section 3 covers DocAve4.0's overall system architecture, Section 4 covers various backup/recovery/management configurations supported by DocAve4.0, and Section 5 covers all the main features of DocAve4.0's "access-from-ANYWHERE" web interface.

← - - - Formatted: Bullets and Numbering

4 System Requirements

4.1 DocAve4.0 Server

4.1.1 Server Platforms

Microsoft Server 2003 (including x64 Editions)
Microsoft Server 2000
Microsoft XP

4.1.2 Server Memory Space

1GB (Minimum), 2GB (Recommended)

4.1.3 Server Disk Space

1GB (Minimum), 3GB (Recommended)

4.2 DocAve4.0 Client

4.2.1 Client Platforms

Microsoft Server 2003 (include x64 Editions)
Microsoft Server 2000 with .NET 1.1 Framework

4.2.2 Client Memory Space

512MB (Minimum), 1GB (Recommended)

4.2.3 Client Disk Space

SharePoint Server Client: 1GB (Minimum), 3GB (Recommended)

5 Installation Location

5.1 *DocAve4.0 Server*

DocAve4.0 Server can be installed on any machine on your network meeting the above requirements. The machine it is installed on will essentially serve as the DocAve4.0 server or the interface to access the DocAve4.0 application from other machines. As such, it is recommended that you install DocAve4.0 Server on a machine with high availability. This can be the same machine that you install the DocAve4.0 Client on.

5.2 *DocAve4.0 Media Server*

DocAve4.0 Media Server can be installed on any machine on your network with enough disk space to accommodate the amount of backup data you are expecting to store. The machine it is installed on will serve as the backup data storage and management server. As such, it is recommended that you install DocAve4.0 Media Server on a machine with high reliability. This can be the same machine that you install the DocAve4.0 Server on.

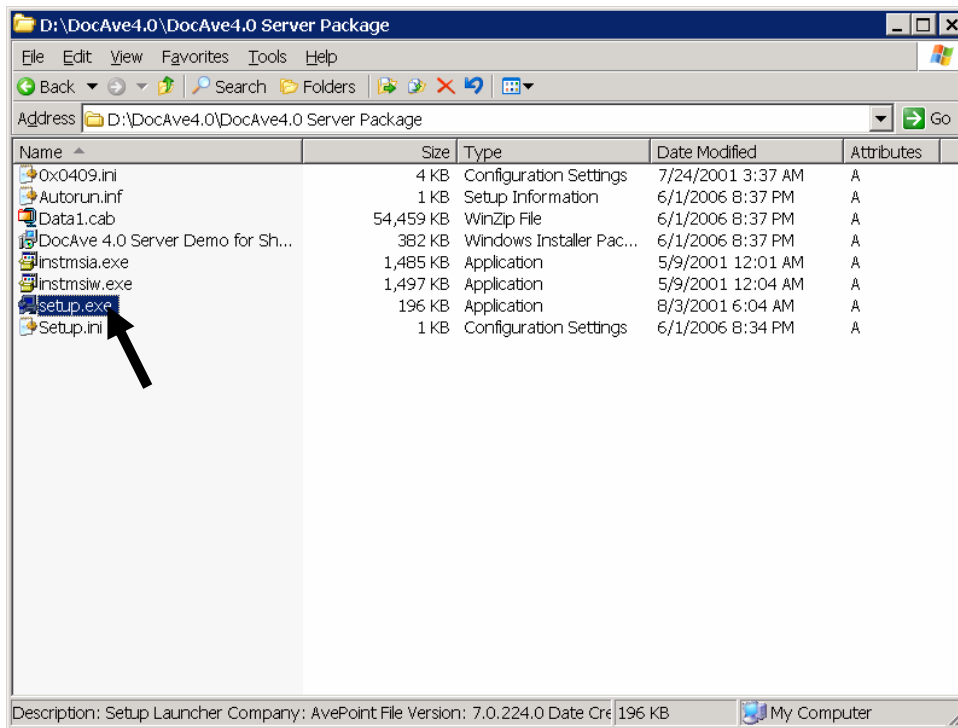
5.3 *DocAve4.0 Client*

The DocAve4.0 Client should be installed on a SharePoint Server.

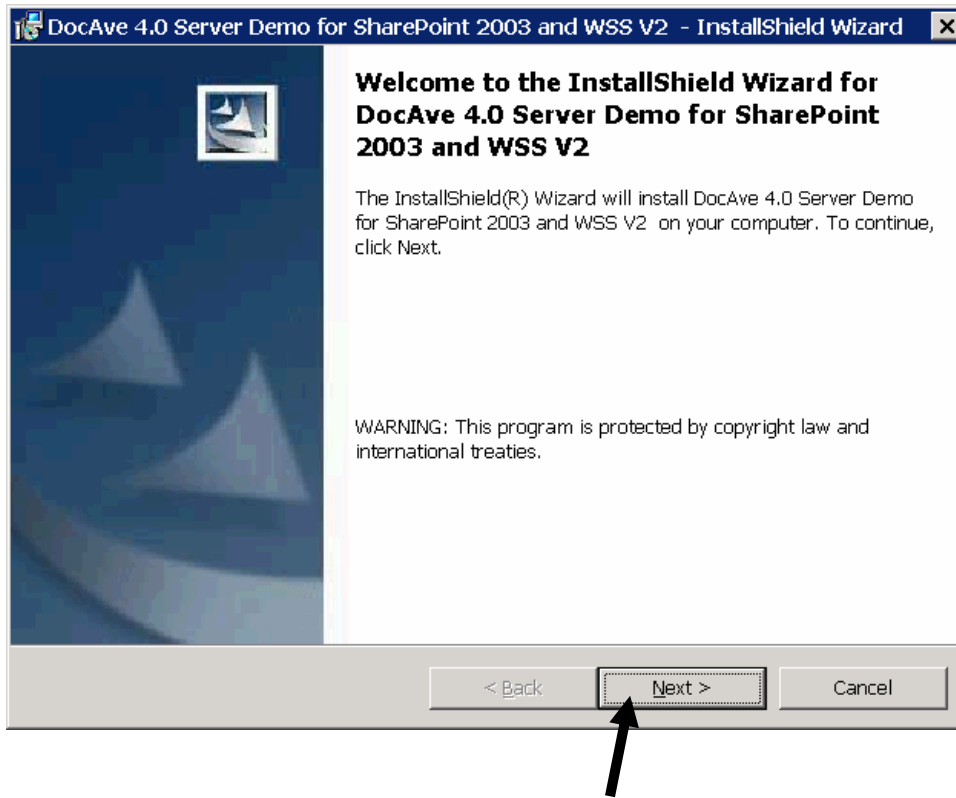
6 Installation Steps

6.1 Install DocAve4.0 Server

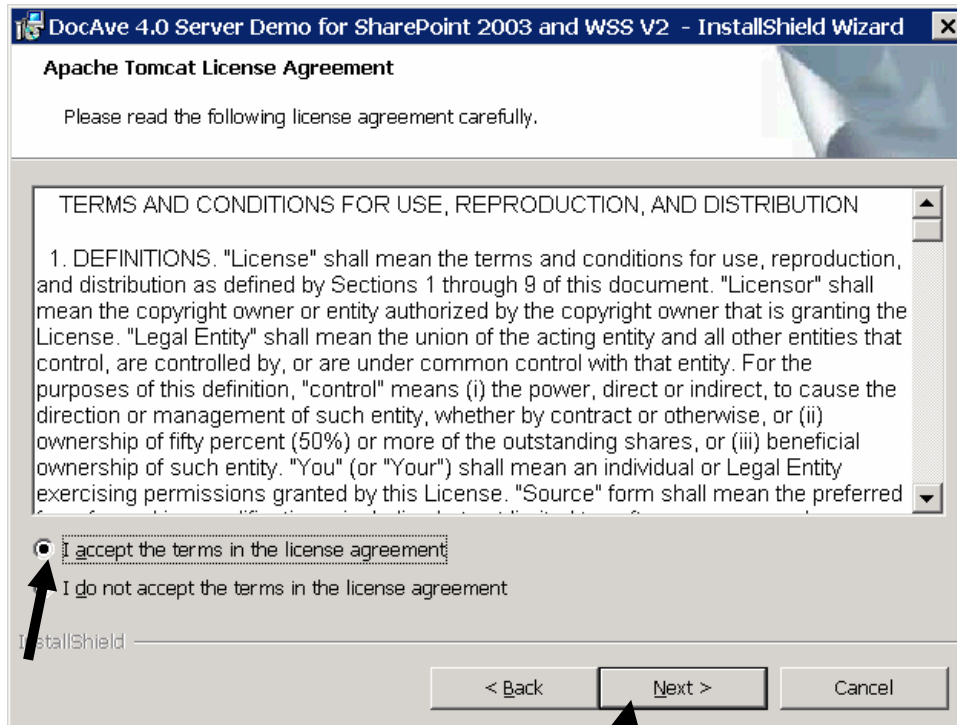
- 6.1.1 Installation Account Requirement: You need to be a local administrator in order to perform the following steps.
- 6.1.2 On the machine where you wish to install the DocAve4.0 Server, open the DocAve4.0 Server Folder. (see Section 2 for installation location)
- 6.1.3 Double Click on the file titled *setup.exe* (as indicated by the arrow below).



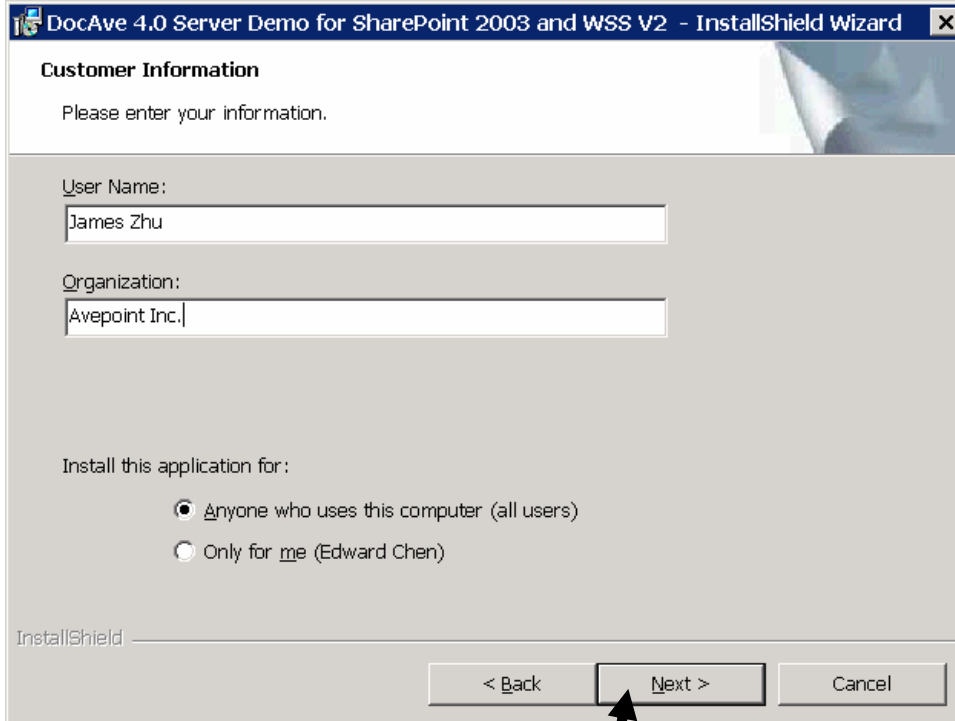
6.1.4 The DocAve4.0 Install Wizard will launch. To advance, click “Next” on the bottom right of the window.



- 6.1.5 To advance through the install wizard, click “Next” on the bottom of each screen. You will be required to accept 3 separate license agreements—for Tomcat, Java Runtime Environment (JRE), and AvePoint DocAve4.0. Read the terms of each agreement, and when you are prepared to accept the terms click on the button to select “I accept the terms in the license agreement” and click “Next”.



6.1.6 After you accept all the license agreements, a screen with user info and permission will be next. Verify all information, and click “Next”.



DocAve 4.0 Server Demo for SharePoint 2003 and WSS V2 - InstallShield Wizard

Customer Information

Please enter your information.

User Name:
James Zhu

Organization:
Avepoint Inc.

Install this application for:

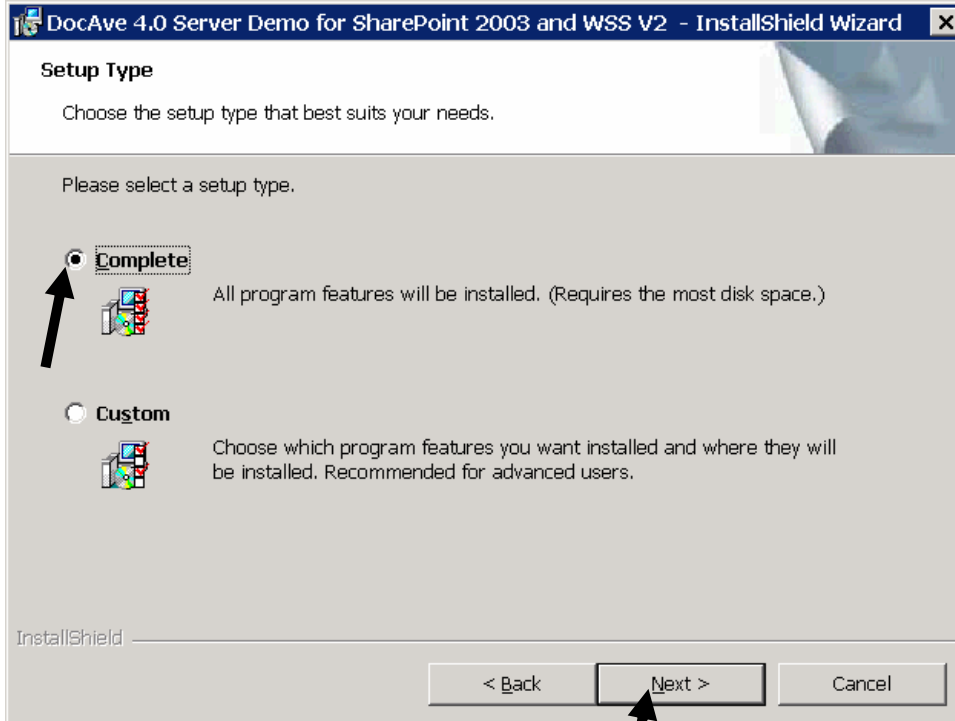
Anyone who uses this computer (all users)

Only for me (Edward Chen)

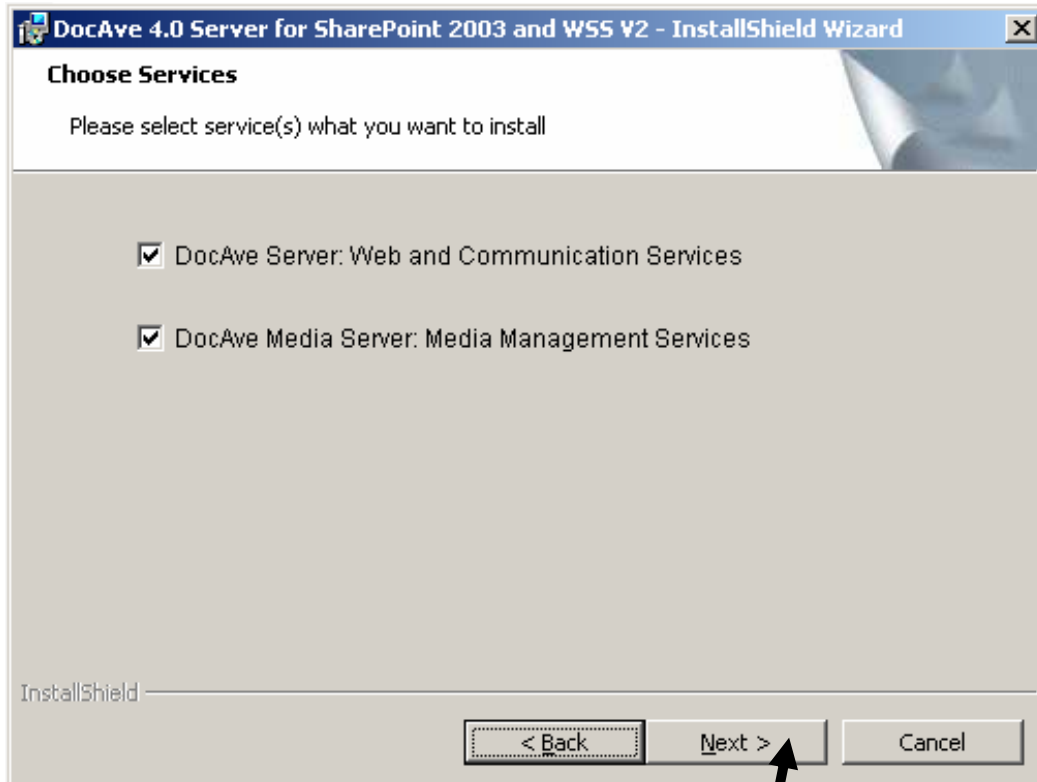
InstallShield

< Back Next > Cancel

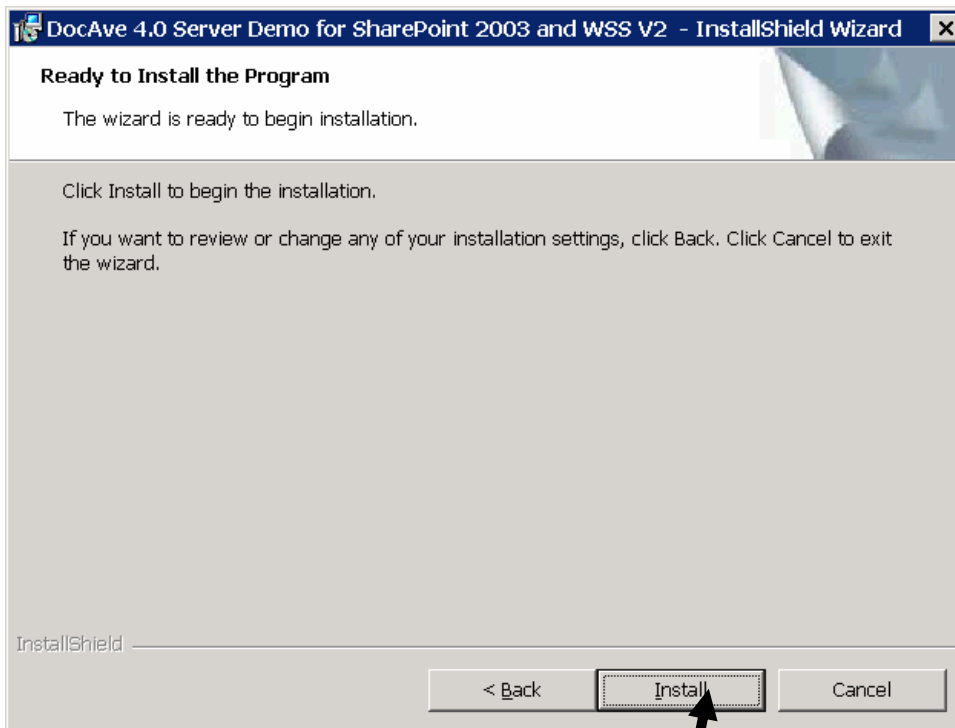
6.1.7 Select the Setup Type by clicking the button next to the type of setup you desire. You should select “Complete Setup”. Click “Next” to continue.



6.1.8 On the next screen, choose which type of server(s) you wish to install on this specific machine. In our example, we will initiate installation of both DocAve4.0 servers on this one machine. If you wish to install the DocAve Media Server on a separate machine, uncheck the box next to DocAve Media Server and follow the instructions in Section 6.3 to install the DocAve Media Server. After your selection, click “Next” to continue.



6.1.9 Click “Install” to proceed with installation of DocAve4.0 service(s) selected for this machine.



6.1.10 Once file installation is complete, the DocAve4.0 Service(s) Configuration window will appear.

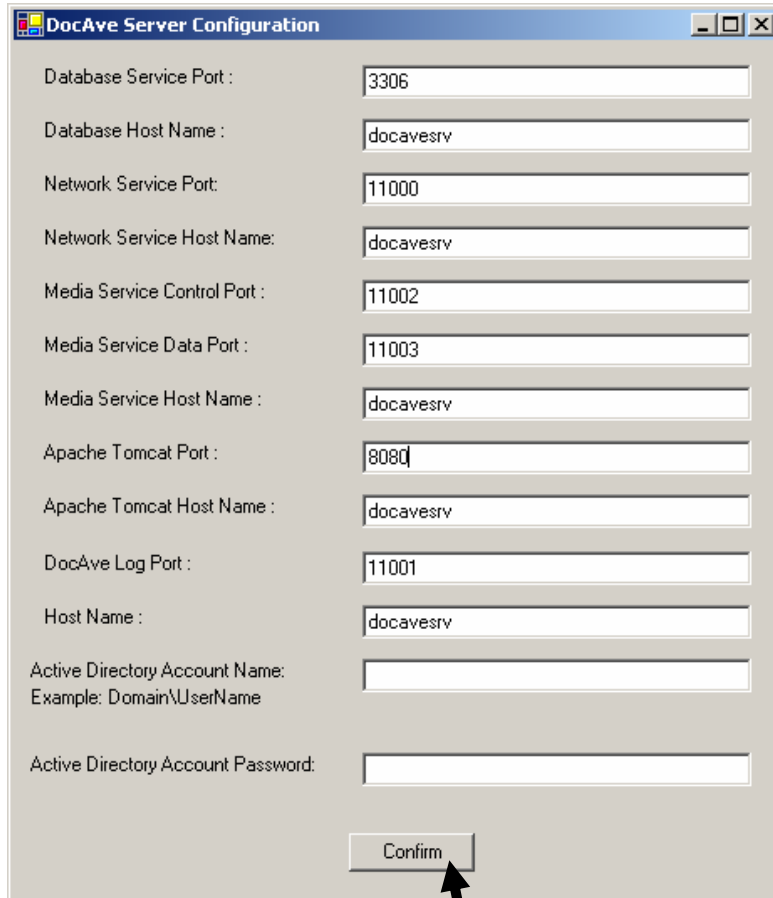
You should accept the default settings unless a known conflict with an existing port exists.

If you change the Tomcat port setting, you should record the new port setting for use in the DocAve4.0 Client installation. The DocAve4.0 Client requires an identical Tomcat port setting as the DocAve4.0 Server in order to function properly.

You will have a choice to install the DocAve4.0 package as a local user or a domain user. Choosing to install as a domain user will integrate DocAve4.0 with Microsoft's Active Directory.

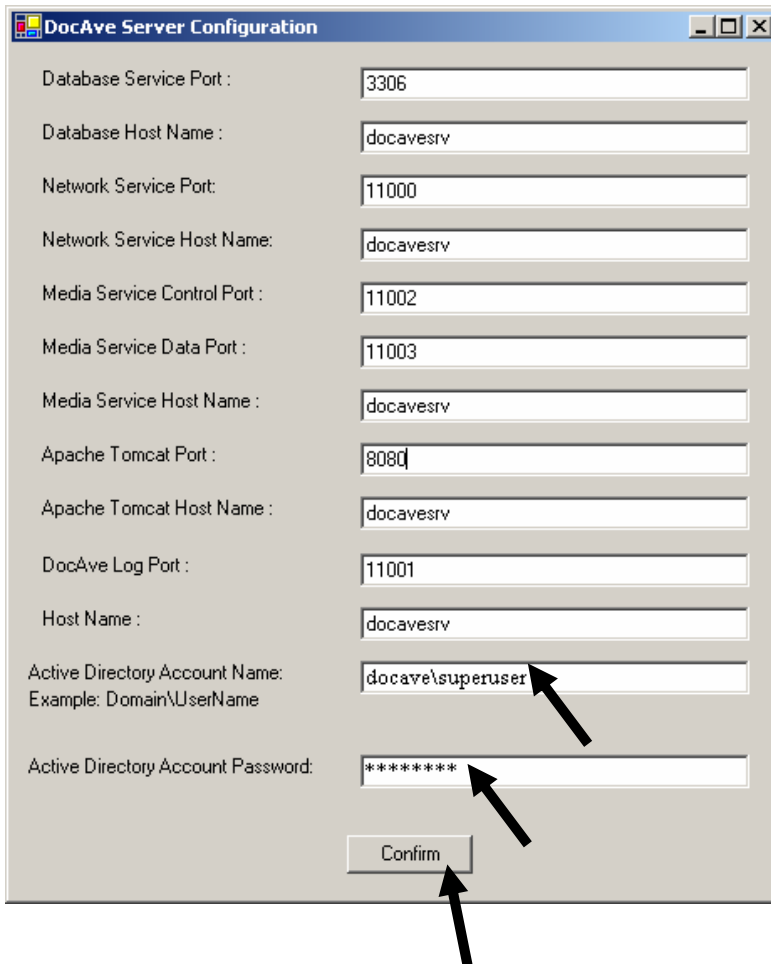
To install DocAve4.0 service(s) as a local user, leave the “Active Directory Account Name” and “password” fields blank and click “Confirm” to continue. Your installation will not be integrated with active directory if you choose to install as a local user.

All of the fields for the Host Names should be prepopulated, if not, please contact the AvePoint support team.



Database Service Port :	<input type="text" value="3306"/>
Database Host Name :	<input type="text" value="docavesrv"/>
Network Service Port:	<input type="text" value="11000"/>
Network Service Host Name:	<input type="text" value="docavesrv"/>
Media Service Control Port :	<input type="text" value="11002"/>
Media Service Data Port :	<input type="text" value="11003"/>
Media Service Host Name :	<input type="text" value="docavesrv"/>
Apache Tomcat Port :	<input type="text" value="8080"/>
Apache Tomcat Host Name :	<input type="text" value="docavesrv"/>
DocAve Log Port :	<input type="text" value="11001"/>
Host Name :	<input type="text" value="docavesrv"/>
Active Directory Account Name: Example: Domain\UserName	<input type="text"/>
Active Directory Account Password:	<input type="password"/>

To install DocAve4.0 service(s) as a domain user, type in a valid username and password for that domain, and click “Confirm” to continue.

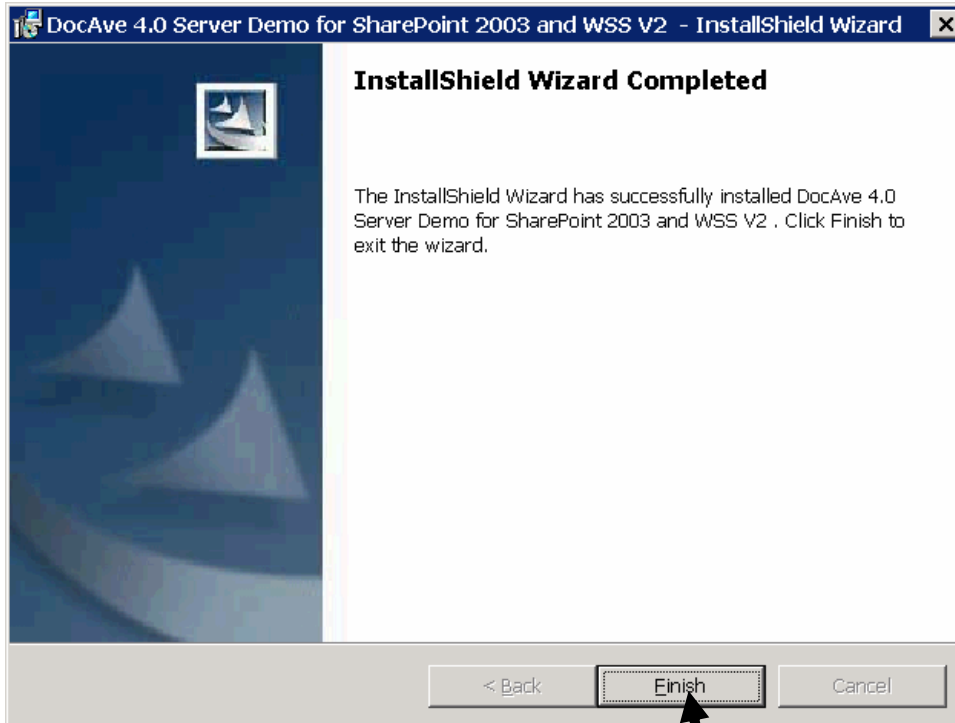


The screenshot shows the "DocAve Server Configuration" dialog box with the following fields and values:

Field	Value
Database Service Port :	3306
Database Host Name :	docavesrv
Network Service Port:	11000
Network Service Host Name:	docavesrv
Media Service Control Port :	11002
Media Service Data Port :	11003
Media Service Host Name :	docavesrv
Apache Tomcat Port :	8080
Apache Tomcat Host Name :	docavesrv
DocAve Log Port :	11001
Host Name :	docavesrv
Active Directory Account Name: Example: Domain\UserName	docave\superuser
Active Directory Account Password:	*****

At the bottom of the dialog box is a "Confirm" button. Three black arrows point to the "Active Directory Account Name" field, the "Active Directory Account Password" field, and the "Confirm" button.

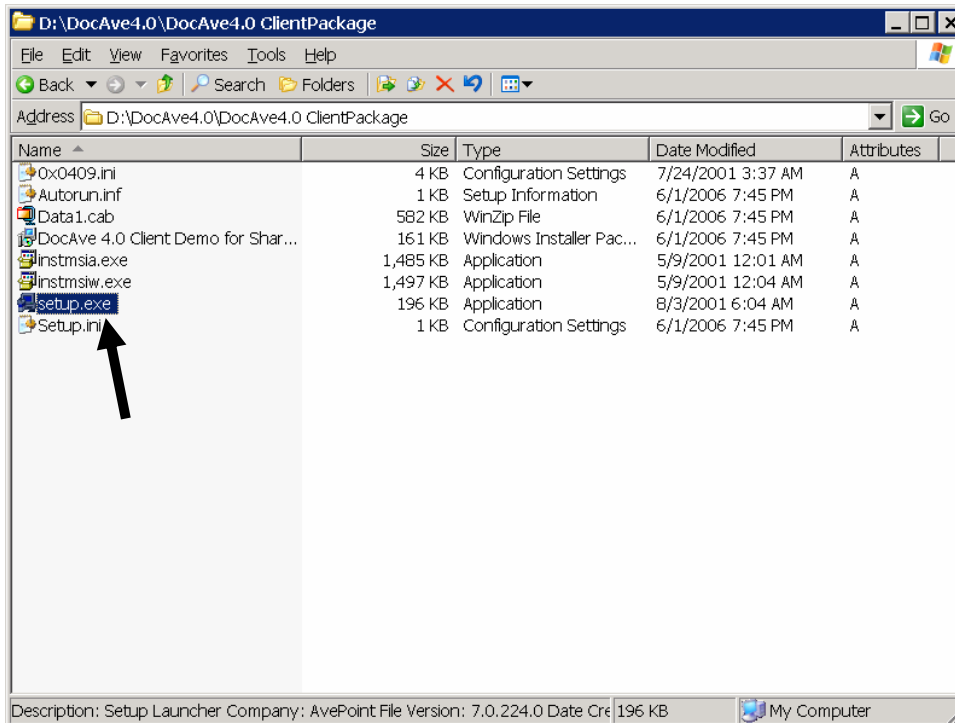
- 6.1.11 The installer will configure the DocAve4.0 Server with your settings. Installation is now complete. Select “Finish” to exit the DocAve4.0 Server Install Wizard.



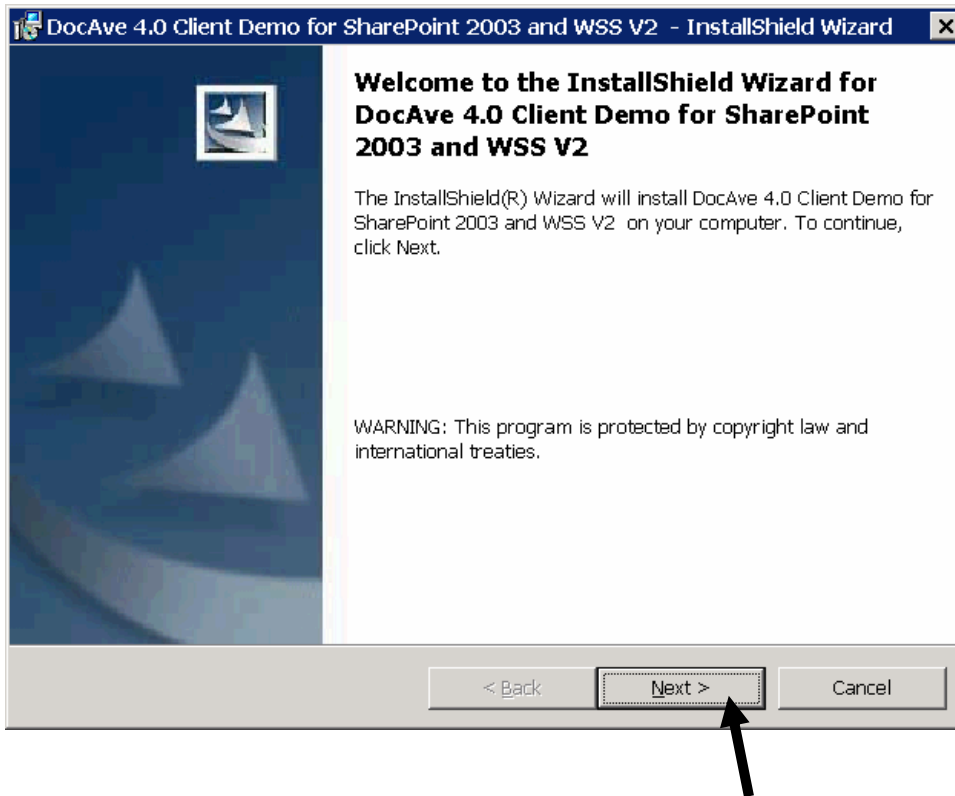
- 6.1.12 Congratulations! You have successfully installed the DocAve4.0 Server. You are now ready to proceed to the next section of this guide to install the DocAve4.0 Client.

6.2 Install DocAve4.0 Client (Installation of DocAve4.0 Server must be completed first)

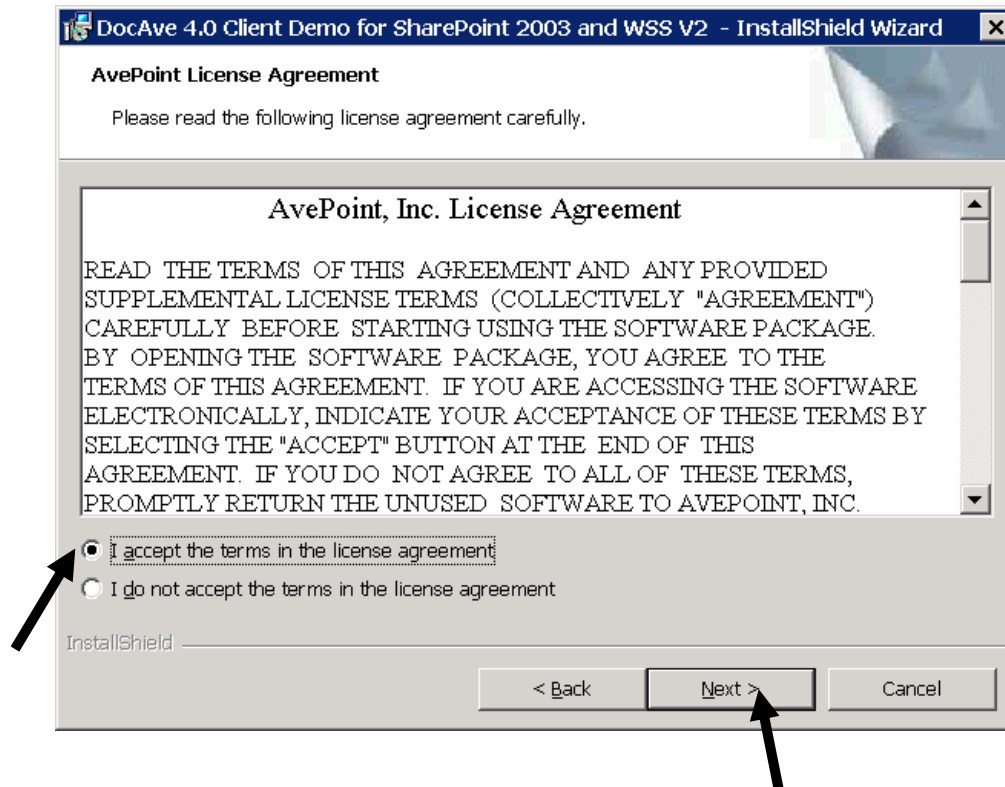
- 6.2.1 Installation Account Requirement: You need to be a local administrator to perform the following steps.
- 6.2.2 On the machine where you wish to install the DocAve4.0 Client, open the DocAve4.0 Client Folder. (see Section 2 for installation location)
- 6.2.3 Double Click on the file titled *setup.exe* (as indicated by the arrow below).



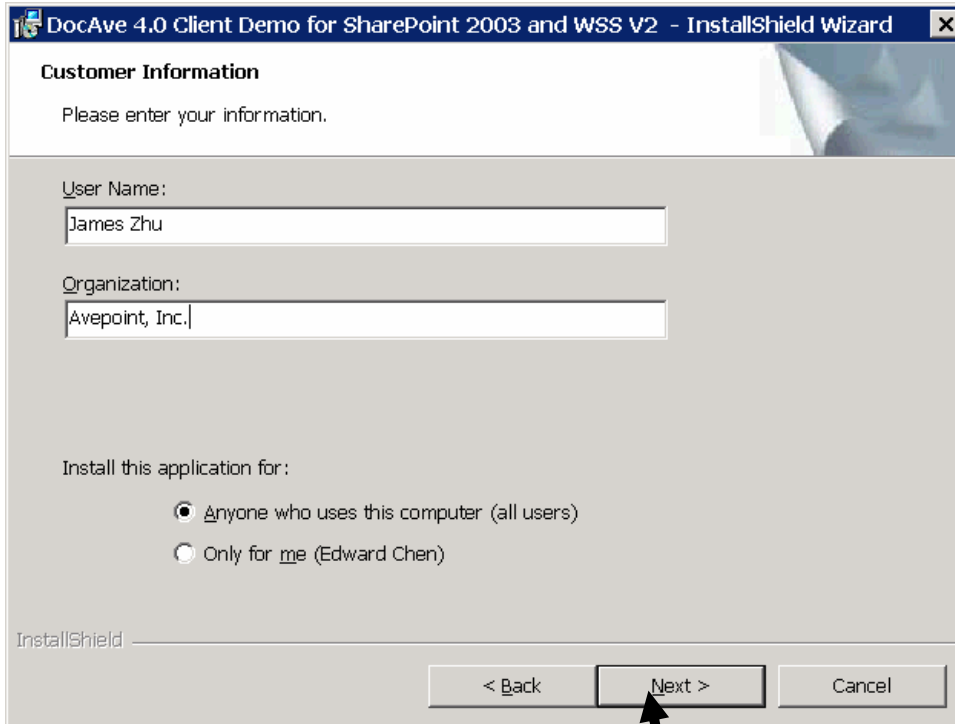
6.2.4 The DocAve4.0 Install Wizard will launch. To advance, click “Next” on the bottom right of the window.



- 6.2.5 To advance through the install wizard, click “Next” on the bottom of each screen. You will be required to accept a license agreement for the AvePoint DocAve4.0. Read the terms of the agreement, when you are prepared to accept the terms, click on the button to select “I accept the terms in the license agreement” and click “Next” to continue.



6.2.6 After you accept the license agreement, a screen with user information and permission will be next. Verify all information, and click “Next” to continue.



DocAve 4.0 Client Demo for SharePoint 2003 and WSS V2 - InstallShield Wizard

Customer Information

Please enter your information.

User Name:
James Zhu

Organization:
Avepoint, Inc.

Install this application for:

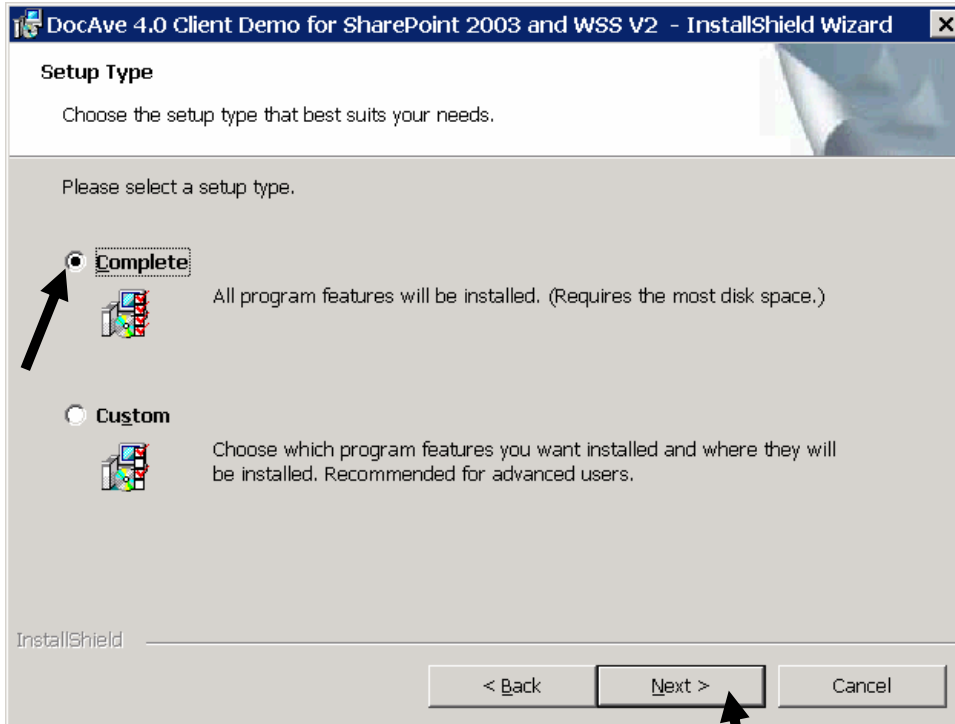
Anyone who uses this computer (all users)

Only for me (Edward Chen)

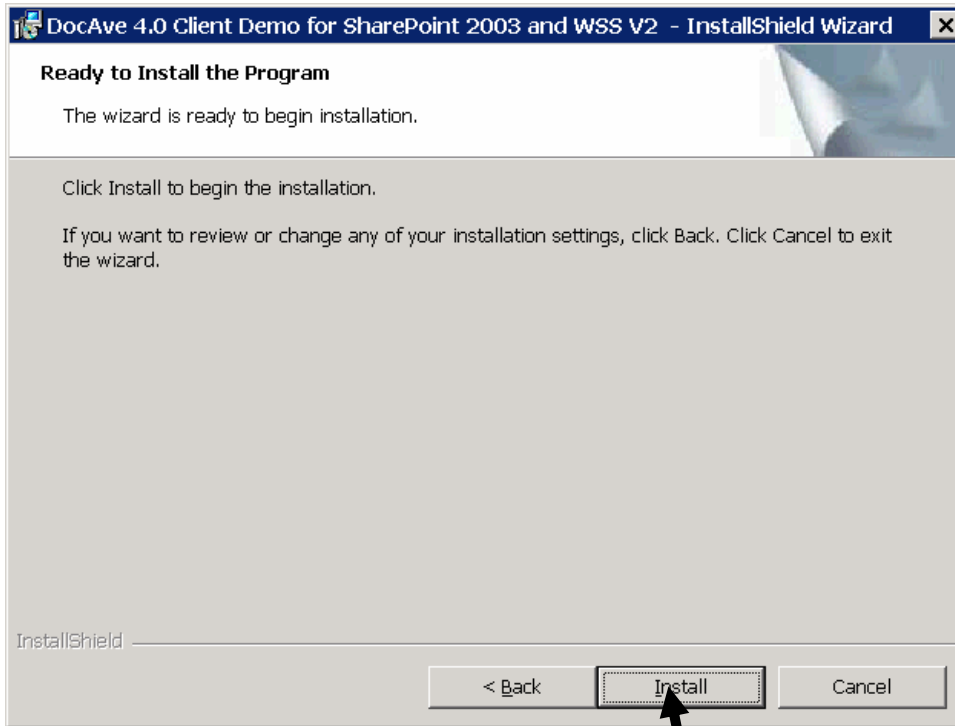
InstallShield

< Back Next > Cancel

6.2.7 Select the Setup Type by clicking the button next to the type of setup you desire. You should select “Complete” setup. Click “Next” to continue.



6.2.8 On the next screen, click “Install” to begin the installation process.



6.2.9 The DocAve4.0 Client files will now be installed on your system.

- 6.2.10 Once file installation is complete, the DocAve4.0 Agent Configuration window will appear.

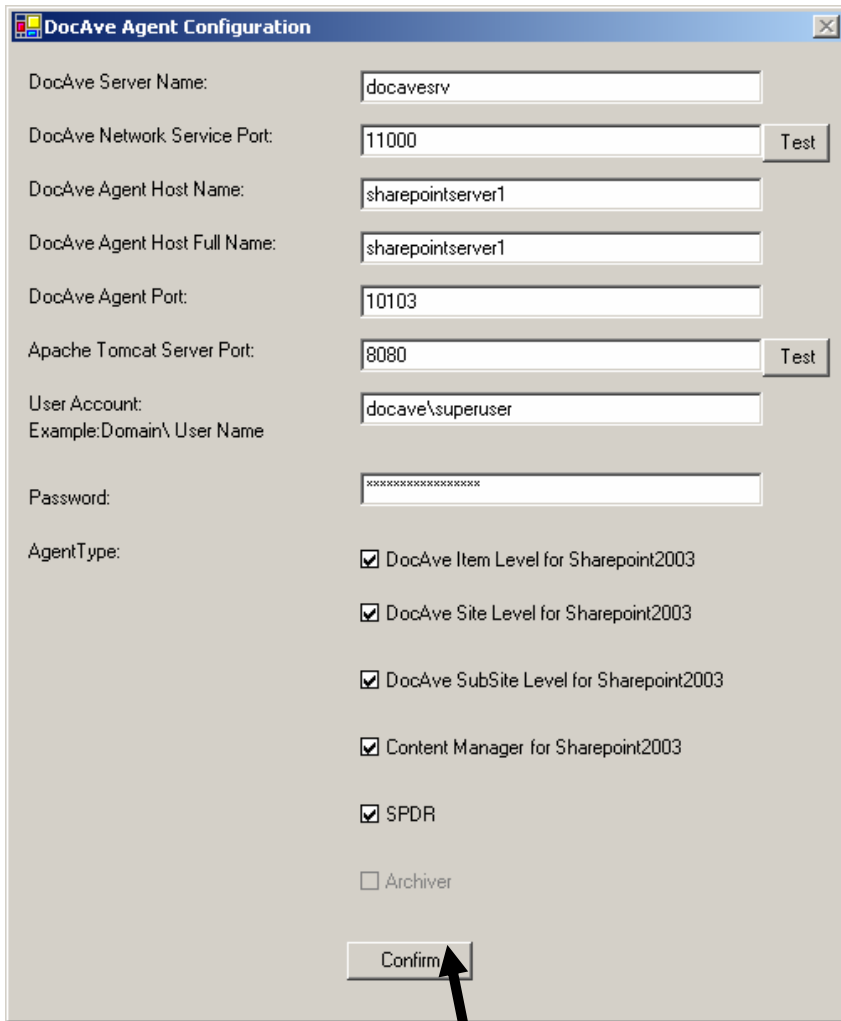
You must enter the name of the machine where the DocAve4.0 Server is installed on.

You should accept the default settings for the remainder of the DocAve4.0 Server settings unless a known conflict exists.

For User Account, enter the domain\username and password of the account used to install DocAve4.0 Client.

Under Agent Type, by default, the wizard automatically selects/checks the boxes for the every possible agent functions. The user may choose which function(s) to enable or disable on the SharePoint server that the agent will reside on. You can do this by manually checking or unchecking the box corresponding to the functions listed next to them.

DocAve4.0 Client requires an identical Tomcat port setting as DocAve4.0 Server in order to function properly. If you changed the Tomcat port setting during the DocAve4.0 Server installation, you must enter the same port designation here.



DocAve Agent Configuration

DocAve Server Name:

DocAve Network Service Port:

DocAve Agent Host Name:

DocAve Agent Host Full Name:

DocAve Agent Port:

Apache Tomcat Server Port:

User Account:
Example:Domain\ User Name

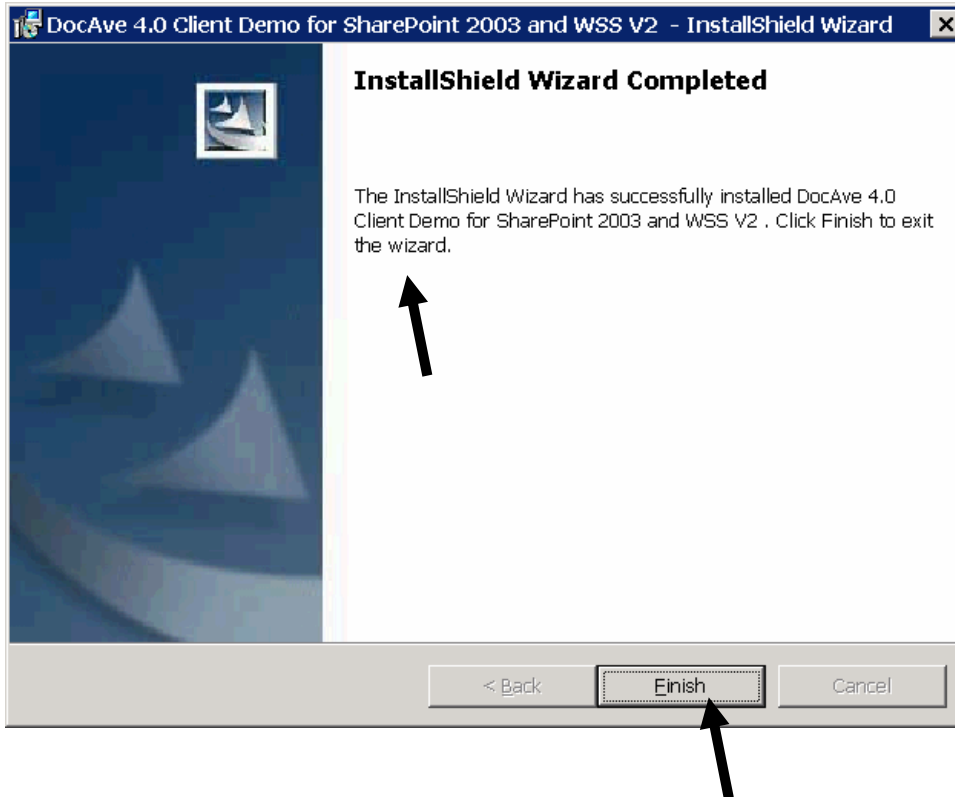
Password:

AgentType:

- DocAve Item Level for Sharepoint2003
- DocAve Site Level for Sharepoint2003
- DocAve SubSite Level for Sharepoint2003
- Content Manager for Sharepoint2003
- SPDR
- Archiver

To accept the settings, click “Confirm”.

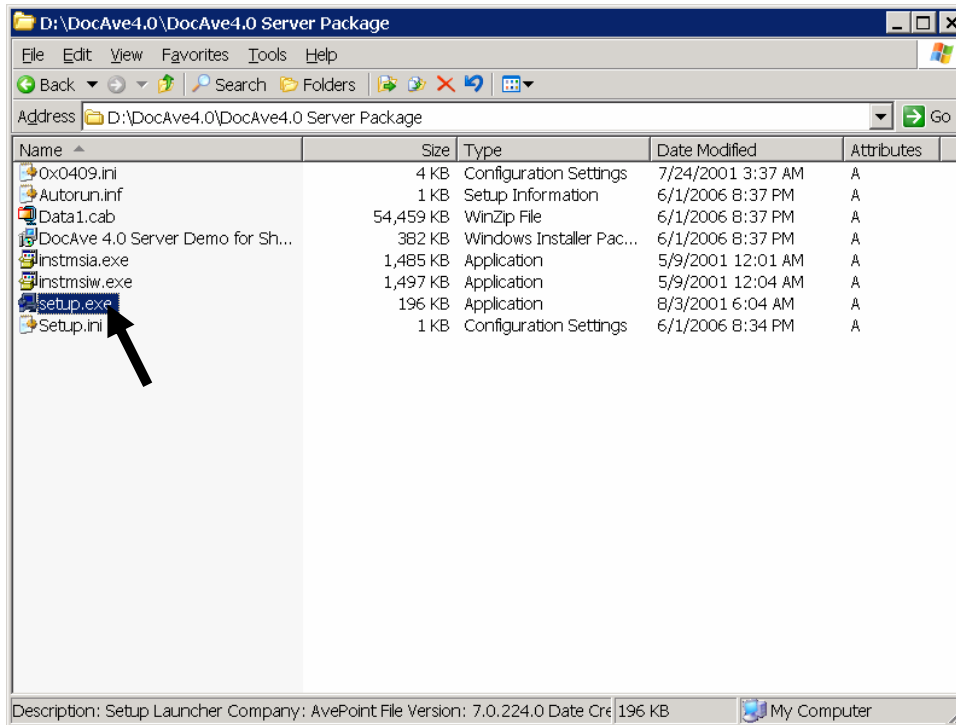
- 6.2.11 The installer will configure the DocAve4.0 Client with your settings. Installation is now complete. Select “Finish” to exit the DocAve4.0 Client Install Wizard.



- 6.2.12 Congratulations! You have successfully installed the DocAve4.0 Client. If you chose to install your DocAve Media Server on another machine, proceed to the next section. Otherwise, you have completed the DocAve4.0 installation process.

6.3 Install DocAve4.0 Media Server (Installation of DocAve4.0 Server must be completed first)

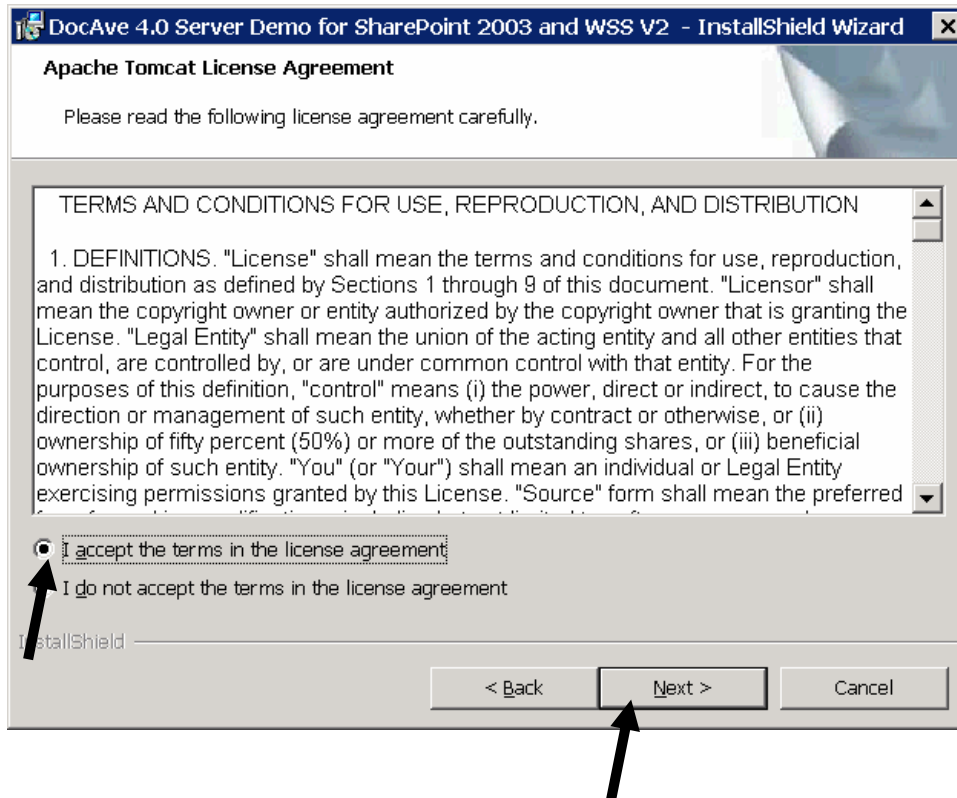
- 6.3.1 Installation Account Requirement: You need to be a local administrator in order to perform the following steps.
- 6.3.2 On the machine where you wish to install the DocAve4.0 Server, open the DocAve4.0 Server Folder. (see Section 2 for installation location)
- 6.3.3 Double Click on the file titled *setup.exe* (as indicated by the arrow below).



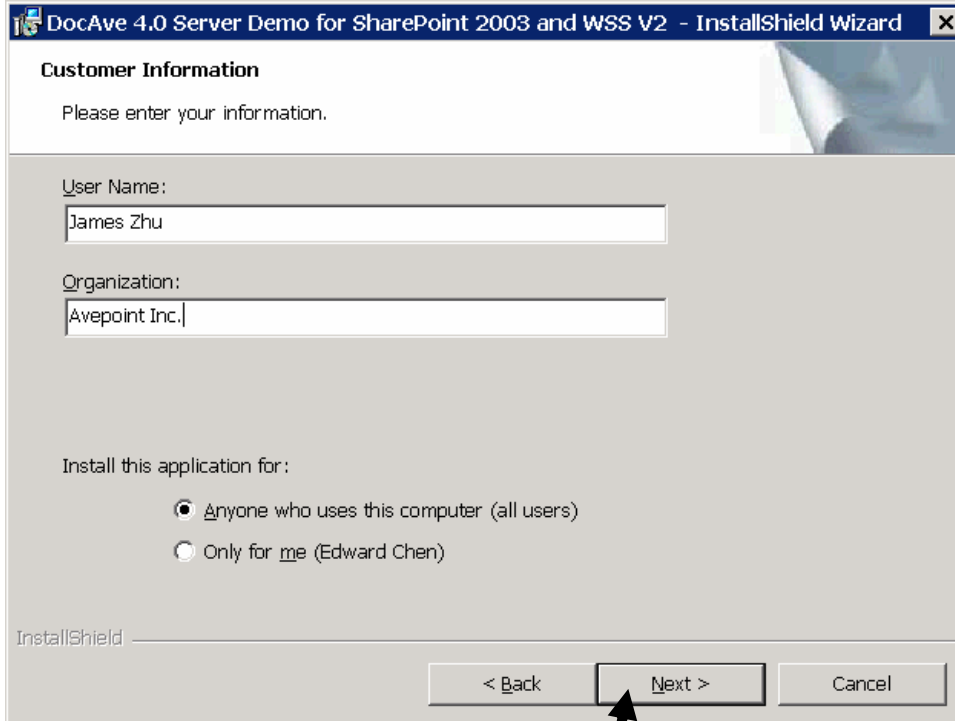
6.3.4 The DocAve4.0 Install Wizard will launch. To advance, click “Next” on the bottom right of the window.



6.3.5 To advance through the install wizard, click “Next” on the bottom of each screen. You will be required to accept 3 separate license agreements—for Tomcat, Java Runtime Environment (JRE), and AvePoint DocAve4.0. Read the terms of each agreement, and when you are prepared to accept the terms click on the button to select “I accept the terms in the license agreement” and click “Next”.



6.3.6 After you accept all the license agreements, a screen with user info and permission will be next. Verify all information, and click “Next”.



DocAve 4.0 Server Demo for SharePoint 2003 and WSS V2 - InstallShield Wizard

Customer Information

Please enter your information.

User Name:
James Zhu

Organization:
Avepoint Inc.

Install this application for:

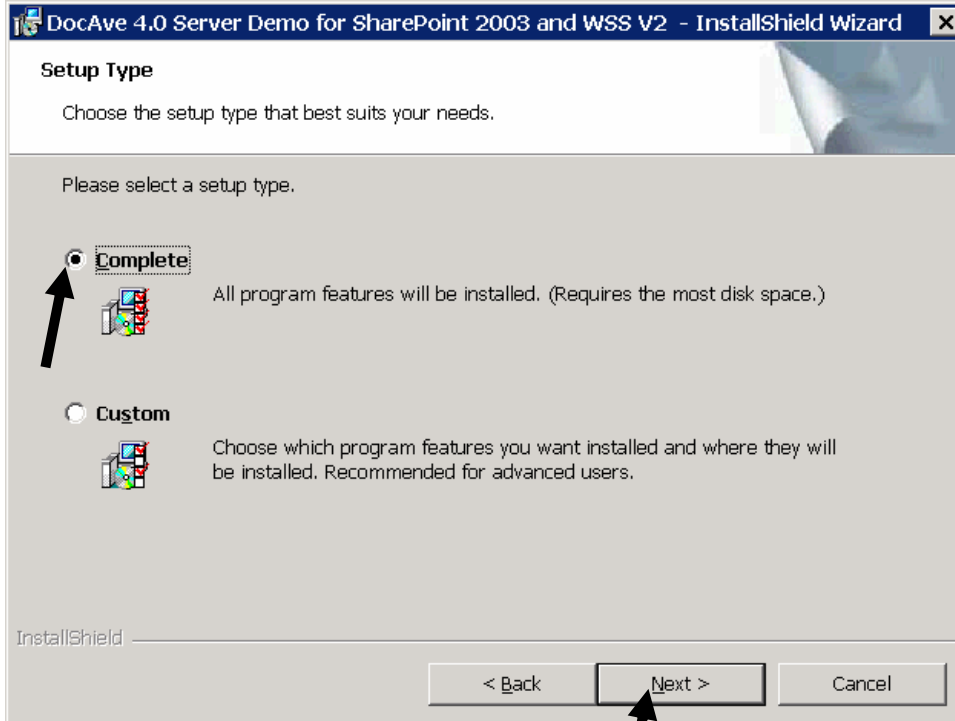
Anyone who uses this computer (all users)

Only for me (Edward Chen)

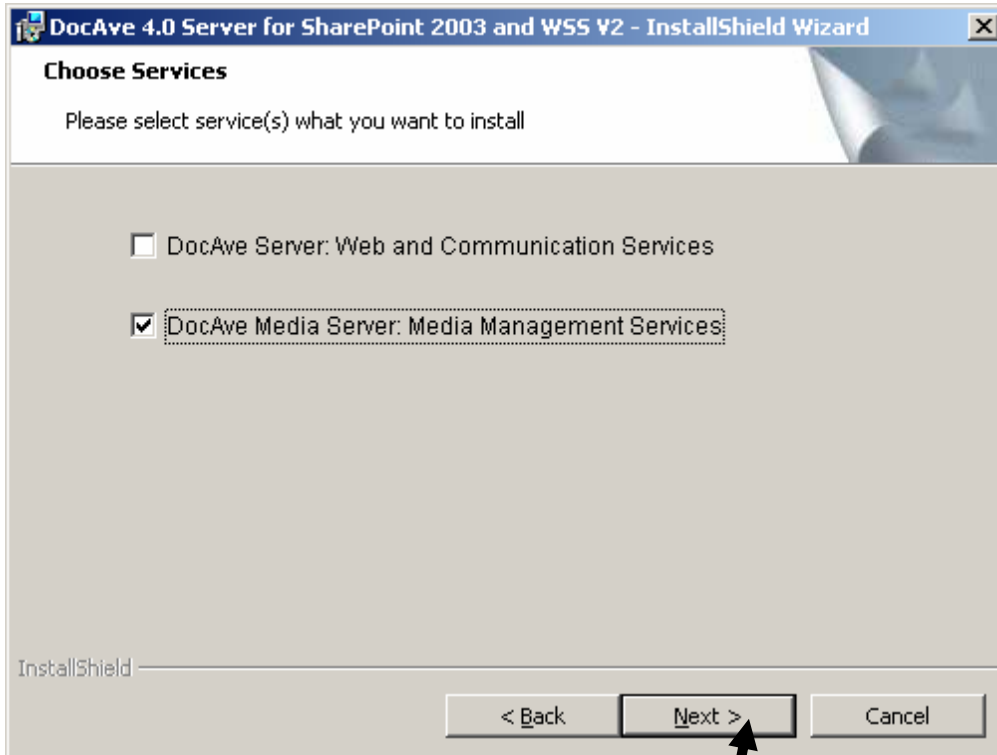
InstallShield

< Back Next > Cancel

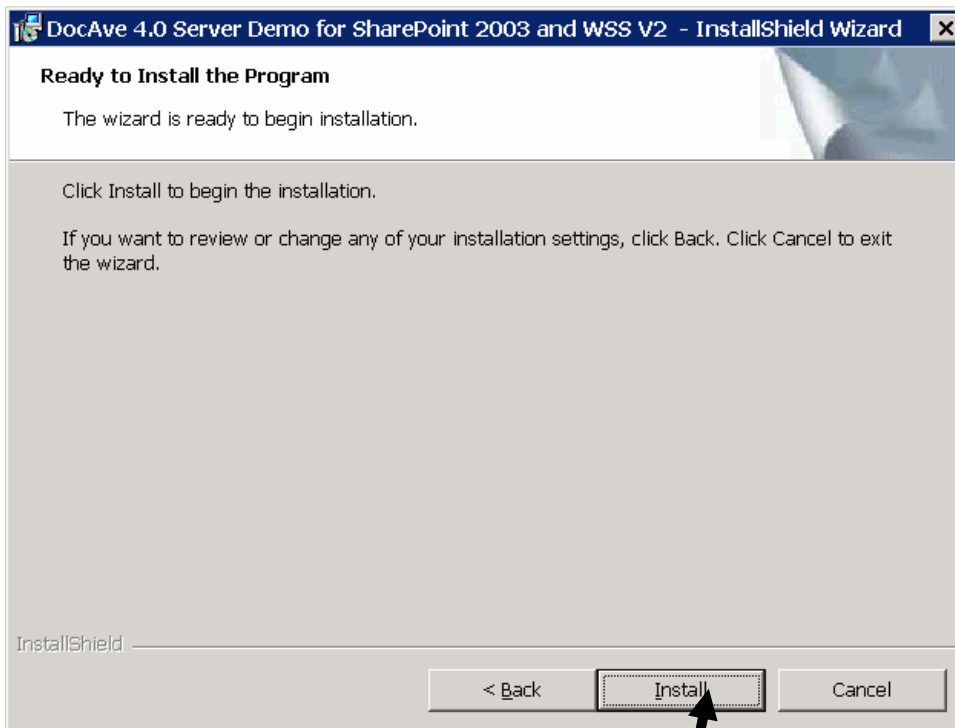
6.3.7 Select the Setup Type by clicking the button next to the type of setup you desire. You should select “Complete Setup”. Click “Next” to continue.



6.3.8 On the next screen, choose the DocAve Media Server Only.
After your selection, click “Next” to continue.



6.3.9 Click “Install” to proceed with installation of DocAve4.0 service(s) selected for this machine.

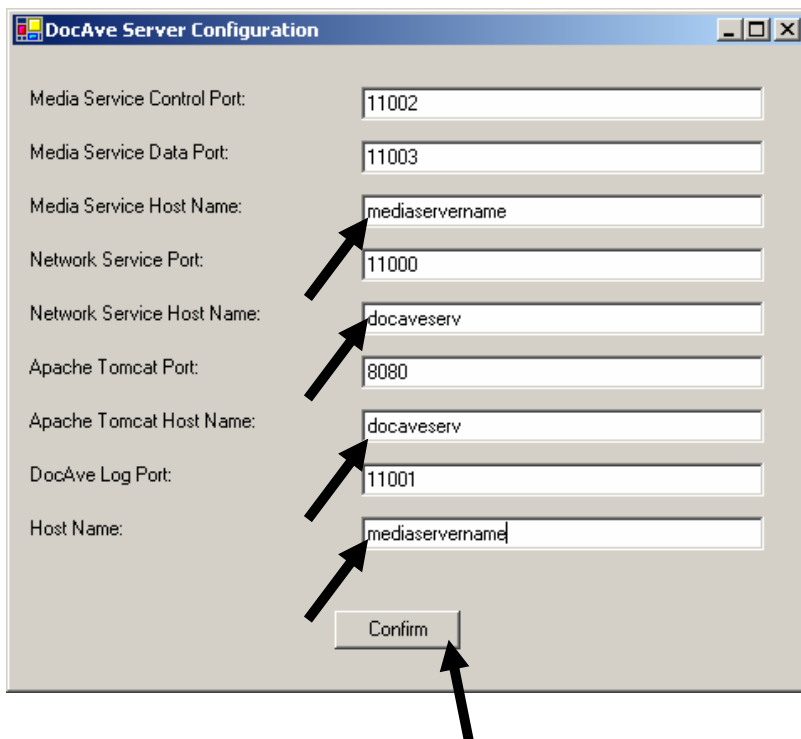


6.3.10 Once the installation is complete, the DocAve4.0 Service(s) Configuration window will appear.

The DocAve4.0 Media Server requires identical port settings as the DocAve4.0 Server in order to function properly.

The Media Service Host Name and Host Name should be the name of the server DocAve4.0 Media Server is installed on.

The Network Service Host Name and Apache Tomcat Host Name should be the same name of your DocAve4.0 Server.



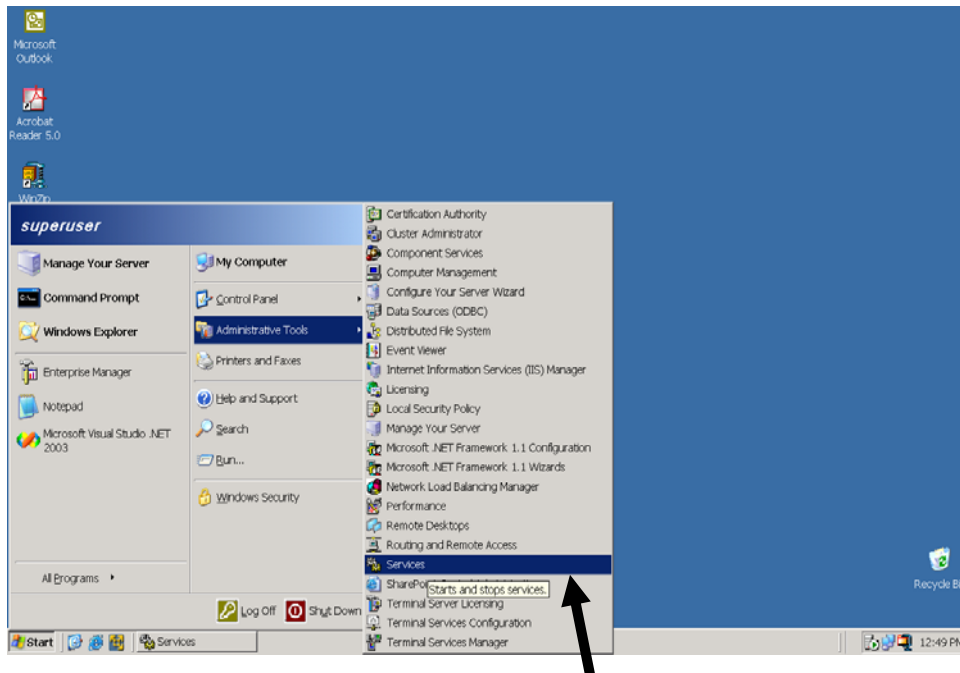
6.3.11 The installer will configure the DocAve4.0 Server with your settings. Installation is now complete. Select “Finish” to exit the DocAve4.0 Server Install Wizard.



6.3.12 Congratulations! You have successfully installed the DocAve4.0 Media Server.

7 Verifying DocAve4.0 using the Microsoft Services tool

7.1 *Open the Services tool on the machine where the DocAve4.0 Server is installed.*



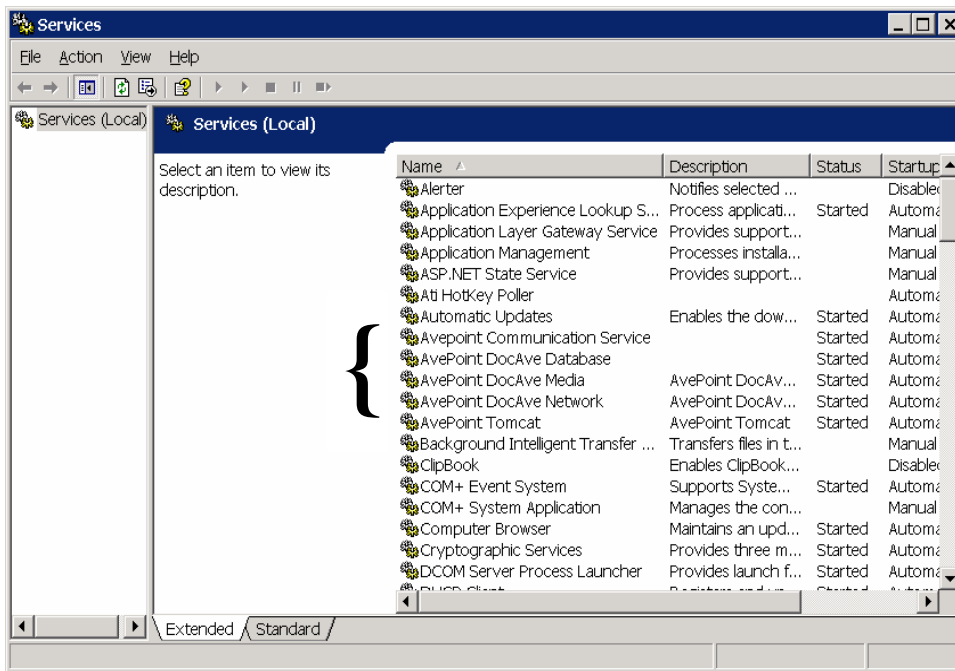
7.2 In the services listing, you will see different services for the DocAve4.0 Client and the DocAve4.0 Server.

7.2.1 On the machine running the DocAve4.0 Client, you should see:

AvePoint Communication Service

7.2.2 On the machine running the DocAve4.0 Server, you should see:

AvePoint DocAve Database
AvePoint DocAve Media
AvePoint DocAve Network
AvePoint Tomcat



7.3 *You can use the Services tool to start or stop any of the AvePoint services.*

7.3.1 All AvePoint services should be running in order to use DocAve4.0.

8 Accessing DocAve4.0

8.1 In Internet Explorer enter the following:

http://<machine>:8080/docave

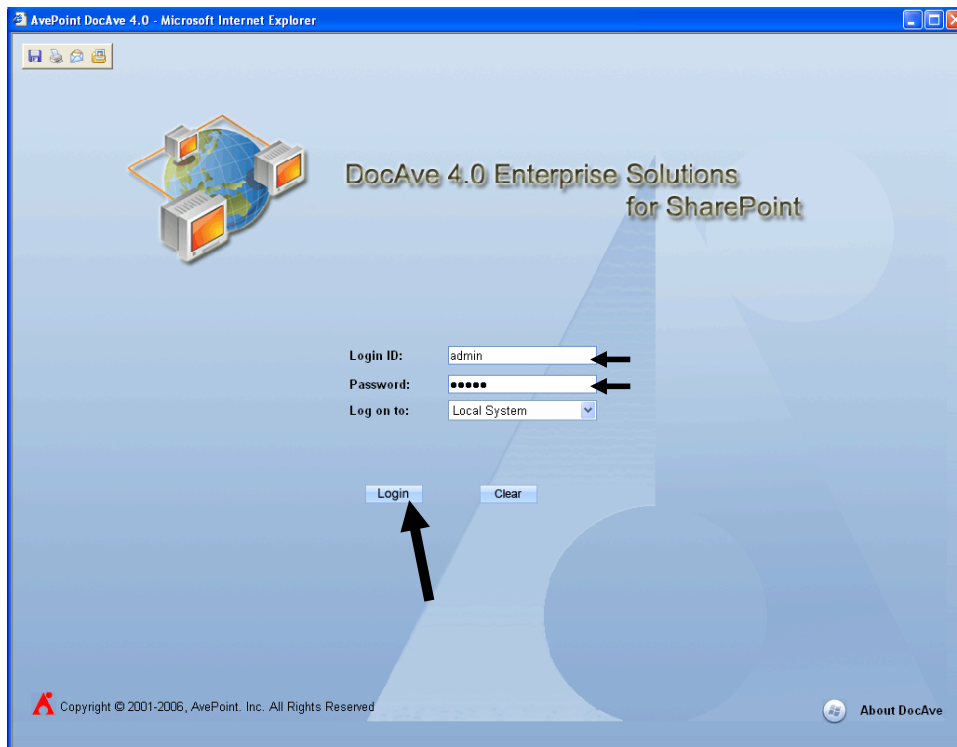
where <machine> is the name or IP address of the machine running DocAve4.0 Server

* Note that all pop-up blockers must be disabled

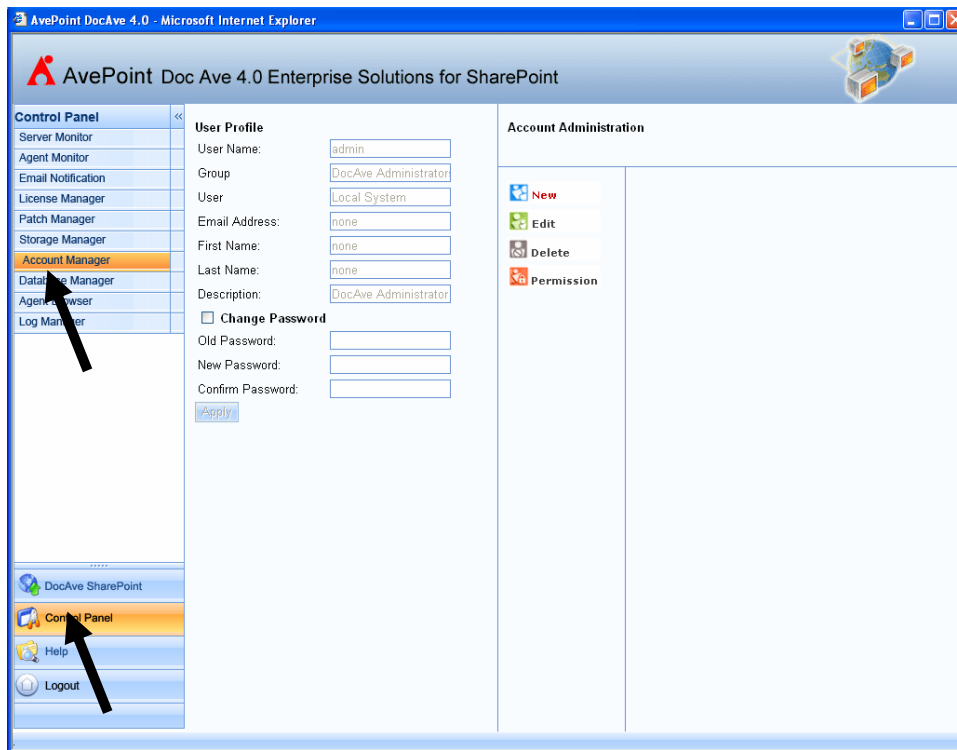
8.2 The DocAve4.0 Login screen will pop-up. Select “Local System”, enter the Initial Login information, and click “Login”.

The Initial Login is as follows:

LoginId: admin
Password: admin



8.3 To change the login information, click on “Control Panel”, then select “Account Manager”.

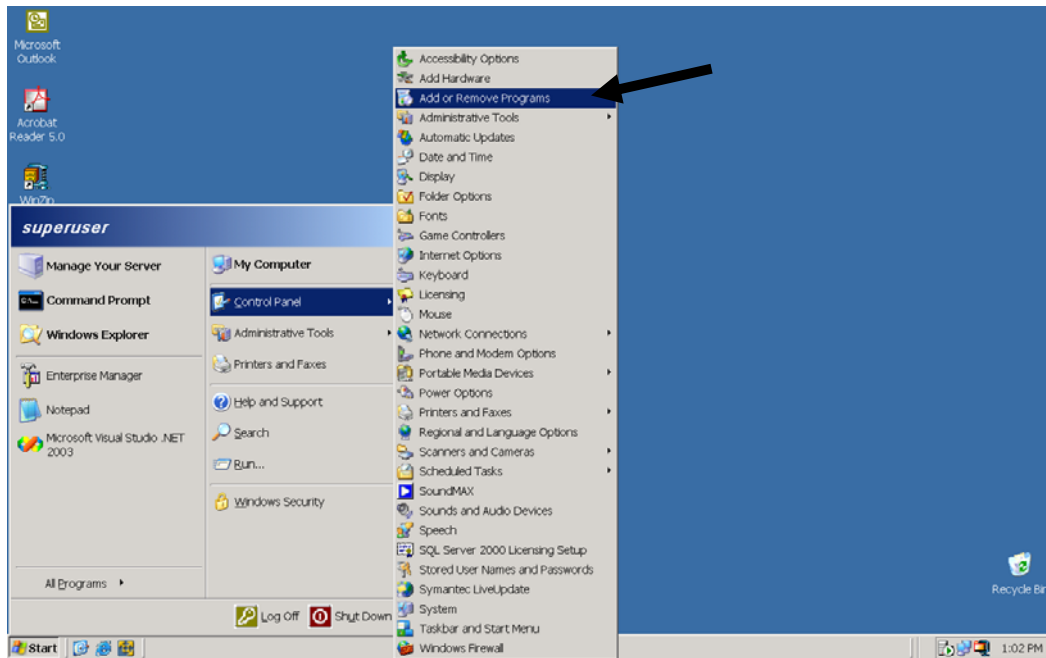


8.4 From the Account Manager tool you can change the default password, as well as create and manage any other DocAve4.0 access accounts.

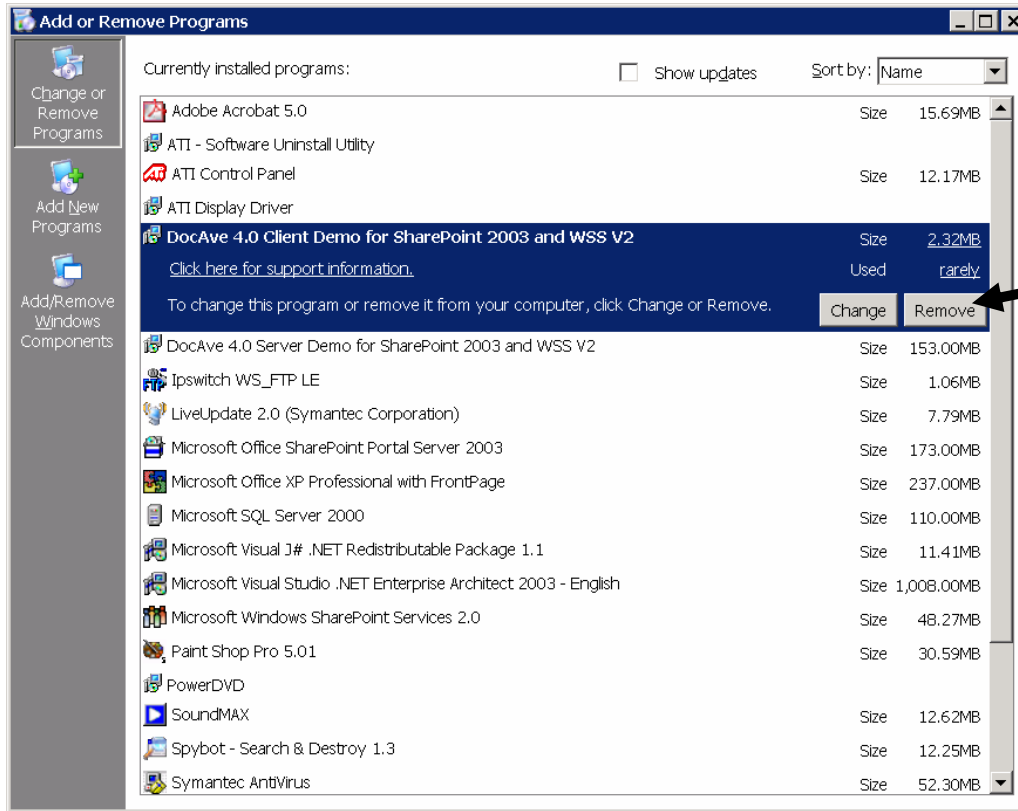
- 8.4.1 Please note that if you wish to disable the Initial Login account of admin, you must first create a new account with the role of Administrator. You must then exit DocAve4.0, login using the new account you have created, and then you can delete the Initial Login account of admin.

9 Uninstall Instructions

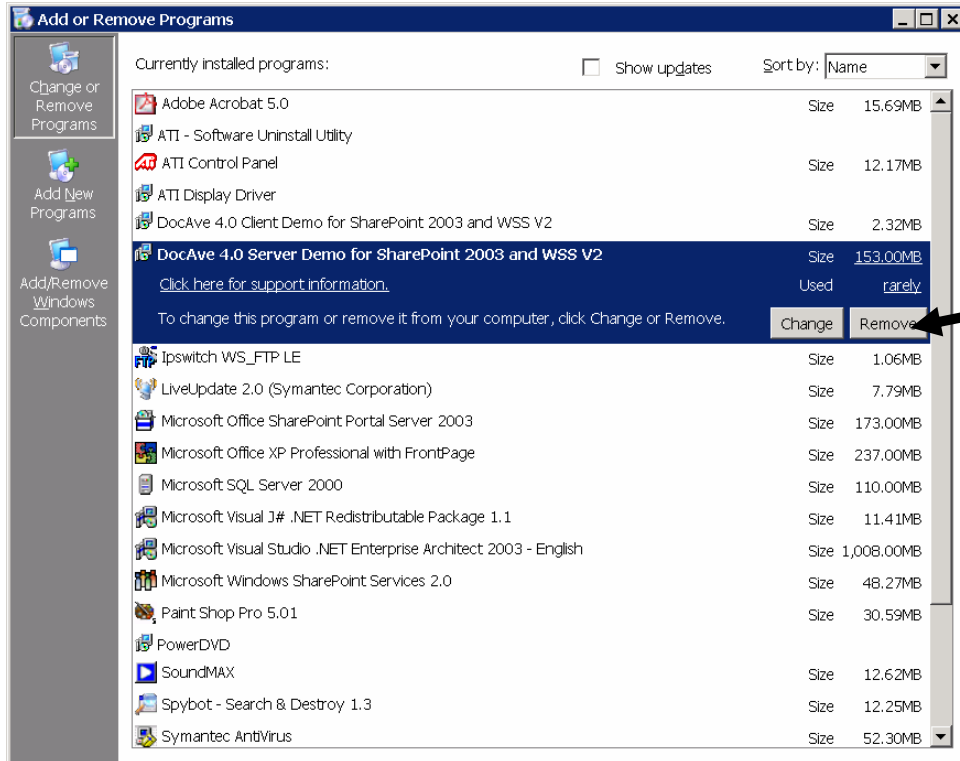
9.1 Both DocAve4.0 Server and DocAve4.0 Client can be removed using the Microsoft “Add or Remove Programs” tool.



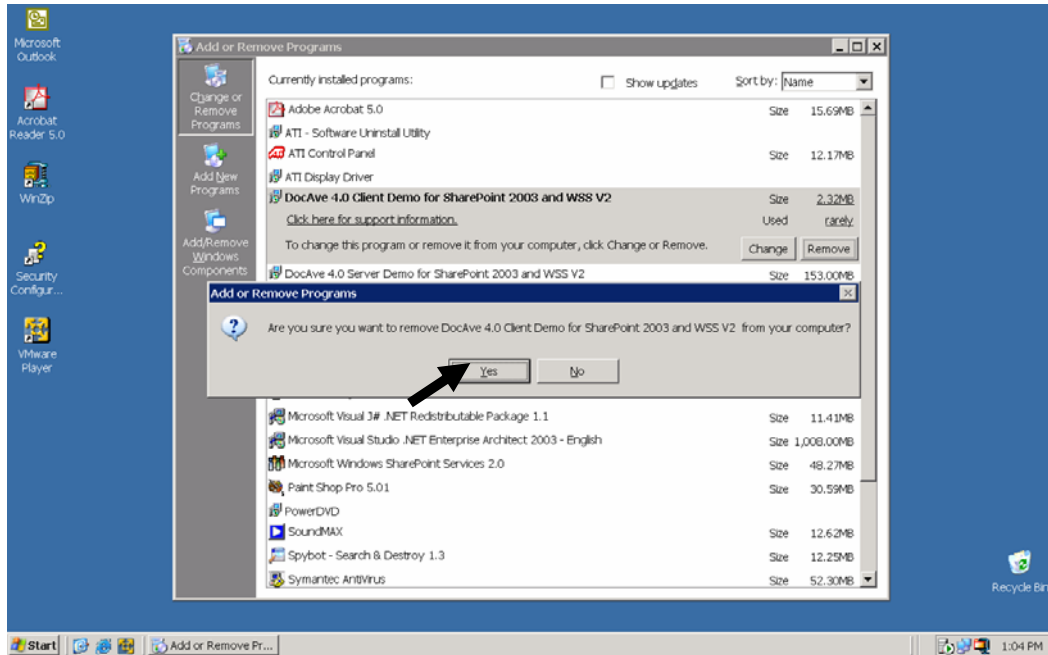
9.2 To uninstall the DocAve4.0 Client, locate “DocAve4.0 Client for SharePoint 2003 and WSS V2”, and click “Remove”.



9.3 To uninstall the DocAve4.0 Server, locate “DocAve4.0 Server for SharePoint 2003 and WSS V2”, and click “Remove”.



9.4 To continue with the uninstallation of the DocAve4.0 Client, click “Yes” to verify removal, and the DocAve4.0 Client will be removed.



9.5 To continue with the uninstallation of the DocAve4.0 Server, click “Yes” to verify removal, and the DocAve4.0 Server will be removed.

